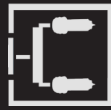




FROM PELLET TO PART
YOUR PARTNER
FOR PRODUCTIVITY
AND SUSTAINABILITY



DME SMART SERIES® M2+

ADVANCED HOT RUNNER TEMPERATURE CONTROL AND PROCESS MONITORING

A fully featured controller platform with advanced capabilities for superior moulding performance. Well suited for tight process control on all co-injection applications, it is your best choice as a direct replacement for many existing outdated controller platforms.

Unlock your operations full potential.

KEY FEATURES

LARGE INTUITIVE TOUCH SCREEN CONTROLS

- Modernized interface
- Quick and easy to use
- Rapid response rates
- Familiar gestures like pinch-to-zoom
- Available in 8", 12" and 17" formats

ADVANCED FUNCTIONALITY

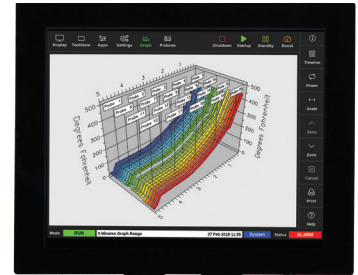
- KORTEC auto cavity balancing
- Auto leak detection
- Auto tool diagnostics
- TC auto slave
- And much more

IO ALARM INTERLOCK

- Interface with any injection machine
- Triggers an alarm when issues are identified
- Pauses the moulding process until corrected
- Helps maintain process consistency

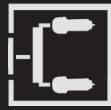
WIRELESS NETWORK CONTROL (WLAN)

- Multi cell operation
- Multiple IP operation
- Download/Upload tool set-up
- Valuable for clean room applications





FROM PELLET TO PART
YOUR PARTNER
FOR PRODUCTIVITY
AND SUSTAINABILITY



DME SMART SERIES® M2+

PRECISE TEMPERATURE CONTROL AND WORLD CLASS FEATURES

SPECIFICATIONS

User Interface	Full Color LCD Touch Screen
Display Sizes	8" (203mm), 12" (305mm), or 17" (432mm)
Control Algorithm	APS (Adaptive Process System)
Power Control	Phase Angle and Burst Firing Modes (Time Proportional, Zero-Crossing)
Control Accuracy	+/- 0.5°C (1°F)
Display Resolution	0.1 (°C or °F)
Power Response Time	8.3 ms at 60 Hz
Temperature Scale	°C or °F (Software Selectable)
Thermocouple	J or K-Type (Software Selectable)
Operating Range	0- 472°C (32- 882°F)
Output Voltage (Max)	264 VAC
Supply Voltage	200/240V 3P Delta or 380/415V 3P Star with Neutral (480V, 3P with optional transformer)
Frequency	50- 60 Hz Automatic Switching
Ambient Temperature Range	5- 45°C (41- 113°F)
Humidity Range	Up to 95% non-condensing
Ground Fault Detection	40mA per Zone
Alarm Output	Closing Contact Relay 5A, 230V (Max)
T/C Connector	Various Options Available
Power Connector	Various Options Available
Input Protection	63mA Nano Fuses on Both T/C Legs
Overload Protection	Semi-conductor fuses on both heater legs
Heater Fuses	15A @ 220V Fast Blow Type
Control Modes	Closed Loop (Auto), Open Loop (Manual), Standby, Boost, Slave
Ports	USB and Ethernet
LED Indicators	Scan, Fuse, Thermocouple, Failure, Ground Fault, Power%
Communications	SPI, Real VNC, Modbus, OPC-UA
Languages	English, French, German, Portuguese, Spanish, Polish, Russian, Chinese, Japanese, Czech, Italian, Turkish

Cabinet Size	# of Cards (Max)	# of Zones (Max)	Dimensions WxDxH cm (in.)
XS	6	24	31x45x81 (12x18x32)
S	12	48	36x45x96 (14x18x38)
M	24	96	45x60x116 (18x24x46)
L	36	144	45x60x141 (18x24x56)
XL	63	252	56x61x168 (22x24x66)

Based on 4z-15A cards. Increase max zones with 6z-5A cards.

INCLUDES:

- Supply cord
- Quick Start Guide

UPON REQUEST:

- 4.8m (15') Cable Set