



FROM PELLET TO PART
YOUR PARTNER
FOR PRODUCTIVITY
AND SUSTAINABILITY



SWITCH MOULD INSERT

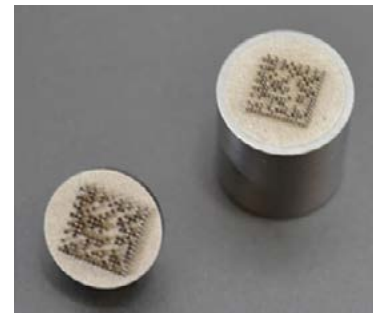
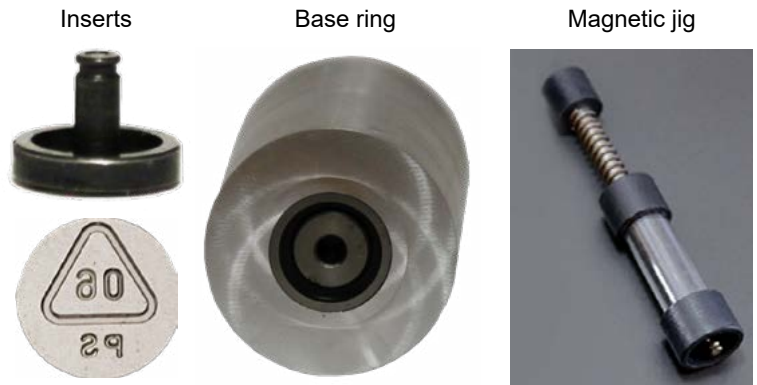
CHANGE YOUR MOULD INSERT FROM THE PARTING LINE SIDE

Looking for a more flexible and quicker way to change markings in your mould? DME has the solution for you. Our Switch mould marking insert is changeable from the parting line using a simple magnetic extraction tool. The Extraction tool is made with rare earth magnets which releases the retaining cage for a stronger more secure removal process. Quickly and easily change logos, material codes, lot numbers, shift changes, days of the month, etc. in as little as 5 seconds.

- Engraved to your specifications
- Display insert will not rotate
- Quickly change insert/message in seconds

SPECIFICATIONS:

Material: HPM 75
Hardness: HRC 35~45
Depth of engraving: ~0.5 mm



Part	Description / note	14 mm
Base ring	Date stamp base	SWIR14
Magnetic jig	Magnetic jig for insert removal	SWIM14
Switch insert - blank	empty insert without text/symbol	SWIB14
Switch insert - with text and or symbol / logo	letter height 0.5mm	EUDATESTAMP
Switch insert with QR code - medium recognition	Data matrix or QR code height 0.2mm (for black color only)	EUDATESTAMP
Switch insert with QR code - high recognition	Data matrix or QR code height 0.5mm (Standard QR code for all colors)	EUDATESTAMP

		14 mm	
QR Code		Size:	25x25
		Max. numeric capacity:	77
		Max. alphanumeric capacity:	47
		Max. binary capacity:	32
		Error correcting rate:	7%
Data Matrix		Size:	24x24
		Max. numeric capacity:	72
		Max. alphanumeric capacity:	52
		Max. binary capacity:	34
		Error correcting rate:	20%~35%



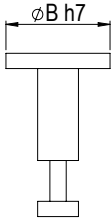
FROM PELLET TO PART
YOUR PARTNER
FOR PRODUCTIVITY
AND SUSTAINABILITY



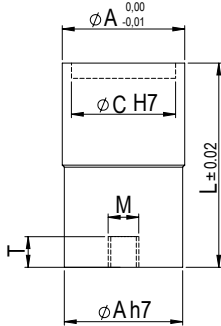
SWITCH MOULD INSERT

CHANGE YOUR MOULD INSERT FROM THE PARTING LINE SIDE

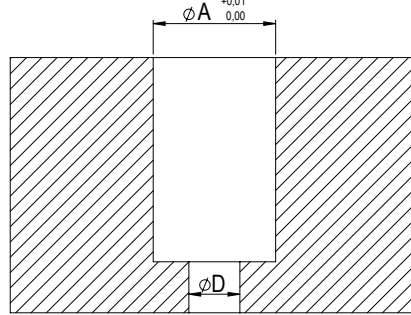
Switch insert



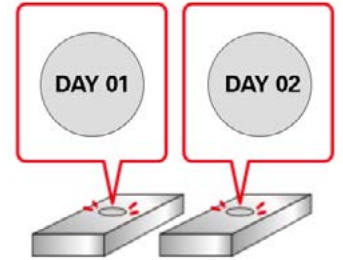
Base ring



Hole



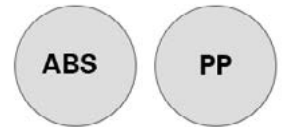
APPLICATION EXAMPLES



Manufactured Date



Lot Number



Material Type

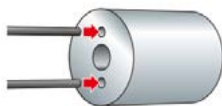
A	B	C	D	L	M	T
14 mm	12 mm	12 mm	6 ~ 9 mm	25 mm	M5	5 mm

INSERTION OF SWITCH INSERT



REMOVE SWITCH INSERT FROM THE BACK

Switch Insert



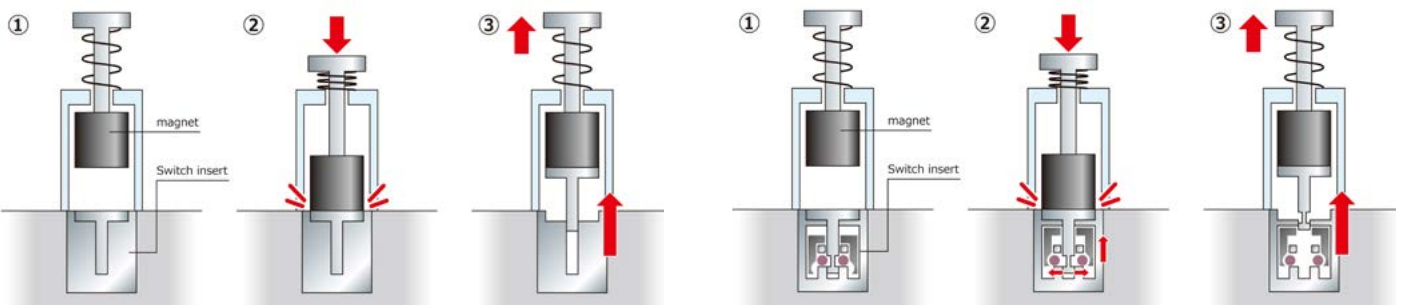
Press with 2 metal rods in the back to remove switch insert

Switch Insert with screw



Press a metal rod in the screw hole at the back to remove the switch insert

SWITCH INSERT REMOVAL



Buy on our eSTORE: store.dme.net