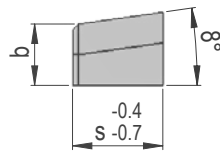


+0.02
s 0.00

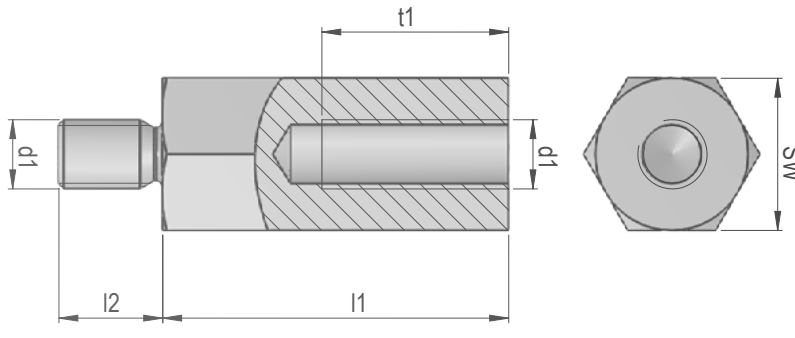


FROM PELLET TO PART...
YOUR PARTNER FOR PRODUCTIVITY
& SUSTAINABILITY

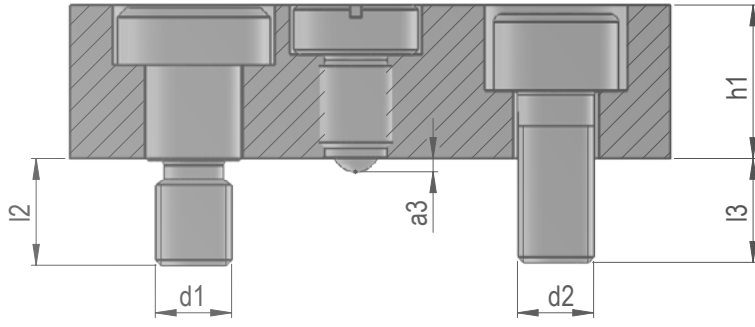
M

F70842

$\varnothing d1$

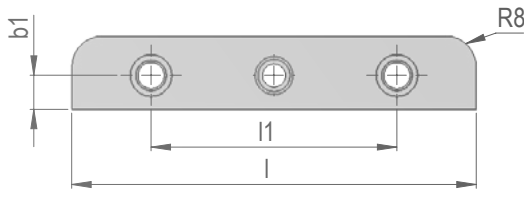
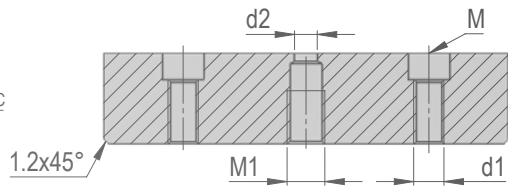


$\varnothing d5$

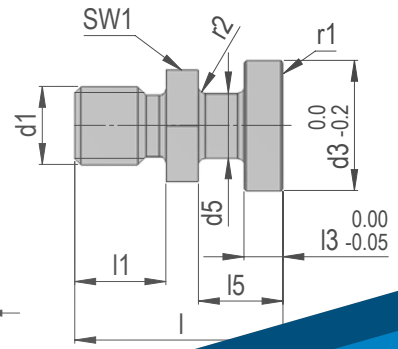
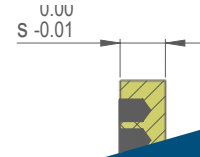
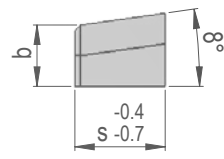
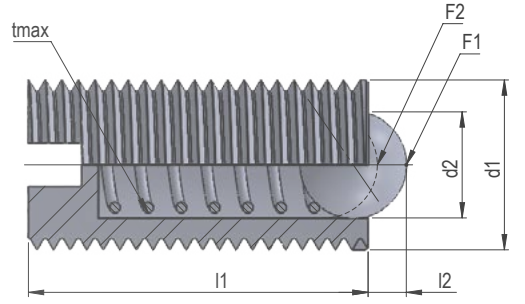
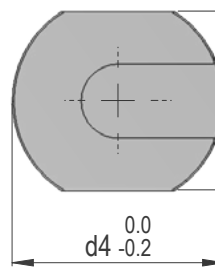
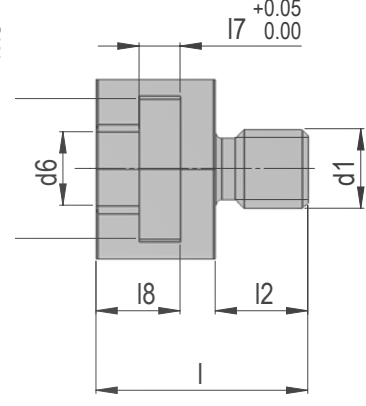
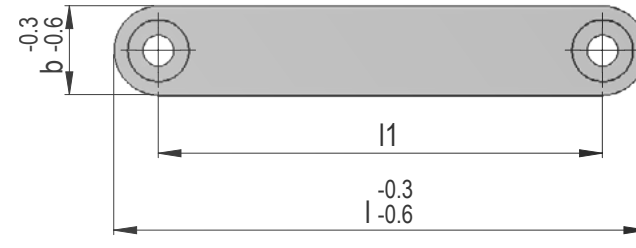
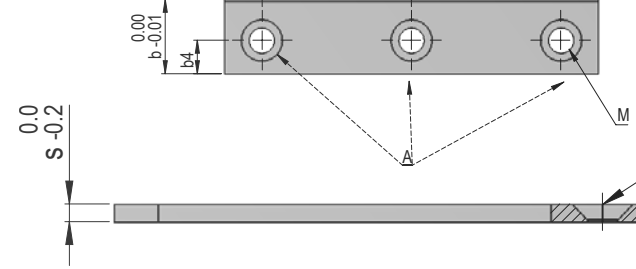
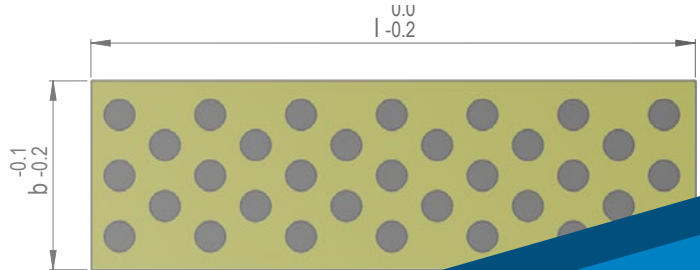
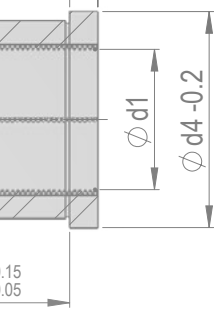


$\approx 800 \text{ N/mm}^2$

Nitrided to 0.3 mm $\approx 62\text{HRC}$



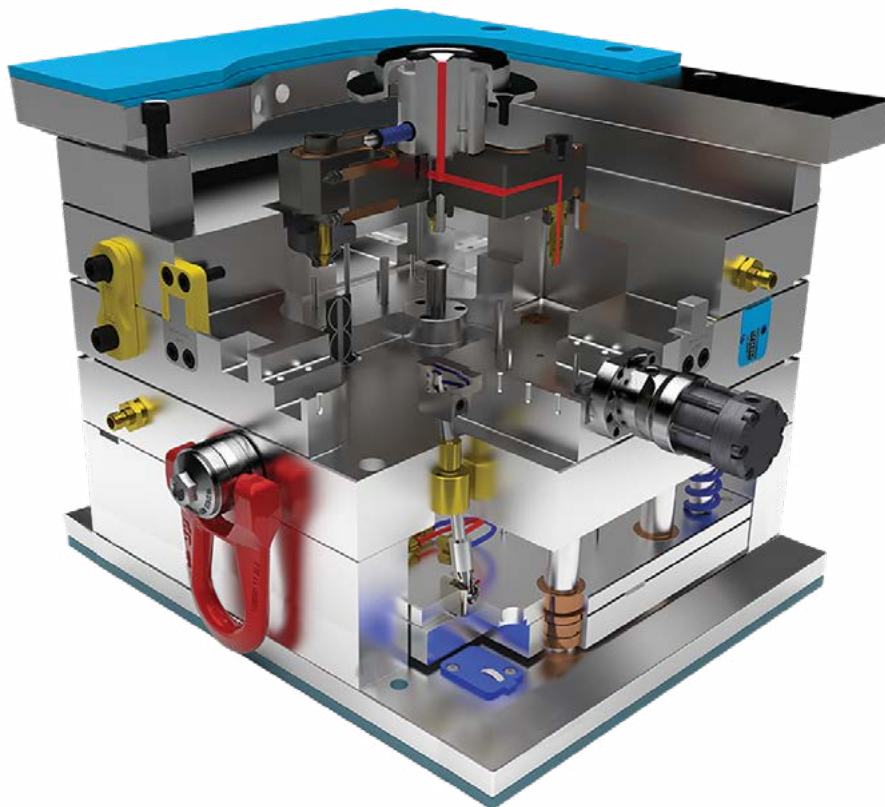
-0.5
-1
k1 ± 0.05



**COMPONENTS
EXTENSION**
FEBRUARY 2023

NEW ADDITIONS TO DME COMPONENTS RANGE

Our range of **compression springs** now includes **round wire springs** with load from light to very heavy. The range of guiding elements for the sliders is extended with standard **Guiding stocks**, **Self-lubricated guiding stocks** and **Self lubricated slide plates**. New solutions for connection between sliders and hydraulic cylinder such as **Coupling set for hydraulic cylinder** or separately **Coupling pin for hydraulic cylinder** and **Counter piece for coupling pin** are now available. In addition we have implemented **Shims** for installation in parting line in **Round and Rectangular shapes**. For safe manipulation with the mold you can choose our newly added **Tool safety device** or part of adjustable lifting device **Distance bolt**. To solve the cable management on molds we have introduced **Cable retainers**. Further, for fixation of cavity and core insert in frames we are delivering **Position wedges** in wide range of dimensions. Two new types of our **Linear ball bearings** for ejection packets provide you more options in mold design. Cooling range expanded to include **Extensions pipe with thread**. Our portfolio of retainers is also extended with **Spring-loaded locking screw** with higher spring force.



CONTENT:

Shim 3

F2680 3
F2682 4

Accessories 5

F2765 5
K701 5
F7084 6
F70841 6
F70842 7
K73 7

Locking screw 8

F1252 8

Wedge 9

F2670 9

Guiding 10

F3141 10
F3172 11
F3118 12
F3119 13

K1100 14

K13 15

Springs 16

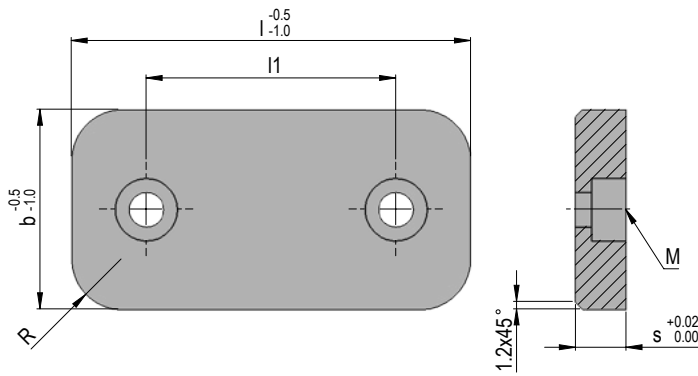
F1536 16
F15365 16
F1537 17
F15375 17
F1538 18
F15385 18
F1539 19

Couplings 20

F2016 20

RECTANGULAR SHIM **F2680**

Mat.: 1.2842 ≈ 58 HRC



REF	l	l1	b	s	R	M
F268002003208_1	32	16	20	8,1	8	M5
F268002003210_1	32	16	20	10,1	8	M5
F268002003212_1	32	16	20	12,1	8	M5
F268002004008_1	40	24	20	8,1	8	M5
F268002004010_1	40	24	20	10,1	8	M5
F268002004012_1	40	24	20	12,1	8	M5
F268002006408_1	64	40	20	8,1	8	M5
F268002006410_1	64	40	20	10,1	8	M5
F268002006412_1	64	40	20	12,1	8	M5
F268002503208_1	32	16	25	8,1	8	M5
F268002503210_1	32	16	25	10,1	8	M5
F268002503212_1	32	16	25	12,1	8	M5
F268002504008_1	40	24	25	8,1	8	M5
F268002504010_1	40	24	25	10,1	8	M5
F268002504012_1	40	24	25	12,1	8	M5
F268002506408_1	64	40	25	8,1	8	M5
F268002506410_1	64	40	25	10,1	8	M5
F268002506412_1	64	40	25	12,1	8	M5
F268003204008_1	40	24	32	8,1	8	M5
F268003204010_1	40	24	32	10,1	8	M6
F268003204012_1	40	24	32	12,1	8	M6
F268003206408_1	64	40	32	8,1	8	M5
F268003206410_1	64	40	32	10,1	8	M6
F268003206412_1	64	40	32	12,1	8	M6
F268003208008_1	80	52	32	8,1	8	M5
F268003208010_1	80	52	32	10,1	8	M6
F268003208012_1	80	52	32	12,1	8	M6
F268003210008_1	100	64	32	8,1	8	M5
F268003210010_1	100	64	32	10,1	8	M6
F268003210012_1	100	64	32	12,1	8	M6
F268004005008_1	50	32	40	8,1	8	M5
F268004005010_1	50	32	40	10,1	8	M6
F268004005012_1	50	32	40	12,1	8	M6
F268004008008_1	80	52	40	8,1	8	M5
F268004008010_1	80	52	40	10,1	8	M6
F268004008012_1	80	52	40	12,1	8	M6
F268004010008_1	100	64	40	8,1	8	M5
F268004010010_1	100	64	40	10,1	8	M6
F268004010012_1	100	64	40	12,1	8	M6
F268004012508_1	125	80	40	8,1	8	M5

REF	l	l1	b	s	R	M
F268004012510_1	125	80	40	10,1	8	M6
F268004012512_1	125	80	40	12,1	8	M6
F268005006408_1	64	40	50	8,1	8	M5
F268005006410_1	64	40	50	10,1	8	M6
F268005006412_1	64	40	50	12,1	8	M6
F268005010008_1	100	64	50	8,1	8	M5
F268005010010_1	100	64	50	10,1	8	M6
F268005010012_1	100	64	50	12,1	8	M6
F268005012508_1	125	80	50	8,1	8	M5
F268005012510_1	125	80	50	10,1	8	M6
F268005012512_1	125	80	50	12,1	8	M6
F268005016008_1	160	100	50	8,1	8	M5
F268005016010_1	160	100	50	10,1	8	M6
F268005016012_1	160	100	50	12,1	8	M6
F268006408008_1	80	52	64	8,1	8	M5
F268006408010_1	80	52	64	10,1	8	M6
F268006408012_1	80	52	64	12,1	8	M6
F268006410008_1	100	64	64	8,1	8	M5
F268006410010_1	100	64	64	10,1	8	M6
F268006410012_1	100	64	64	12,1	8	M6
F268006412508_1	125	80	64	8,1	8	M5
F268006412510_1	125	80	64	10,1	8	M6
F268006412512_1	125	80	64	12,1	8	M6
F268006416008_1	160	100	64	8,1	8	M5
F268006416010_1	160	100	64	10,1	8	M6
F268006416012_1	160	100	64	12,1	8	M6
F268008008010_1	80	52	80	10,1	8	M6
F268008008012_1	80	52	80	12,1	8	M8
F268008010010_1	100	64	80	10,1	8	M6
F268008010012_1	100	64	80	12,1	8	M8
F268008012510_1	125	80	80	10,1	8	M6
F268008012512_1	125	80	80	12,1	8	M8
F268008016010_1	160	100	80	10,1	8	M6
F268008016012_1	160	100	80	12,1	8	M8
F268010010012_1	100	64	100	12,1	8	M8
F268010012512_1	125	80	100	12,1	8	M8
F268010016012_1	160	100	100	12,1	8	M8
F268010020012_1	200	130	100	12,1	8	M8
F268012512512_1	125	80	125	12,1	8	M8
F268012516012_1	160	100	125	12,1	8	M8

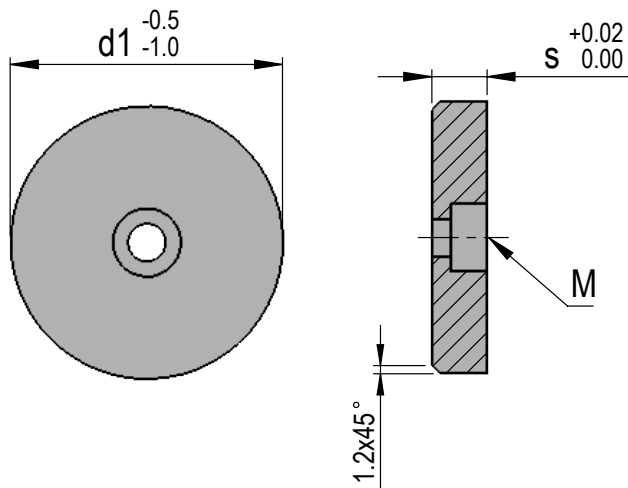
CAD reference point



SHIM

ROUND SHIM
F2682

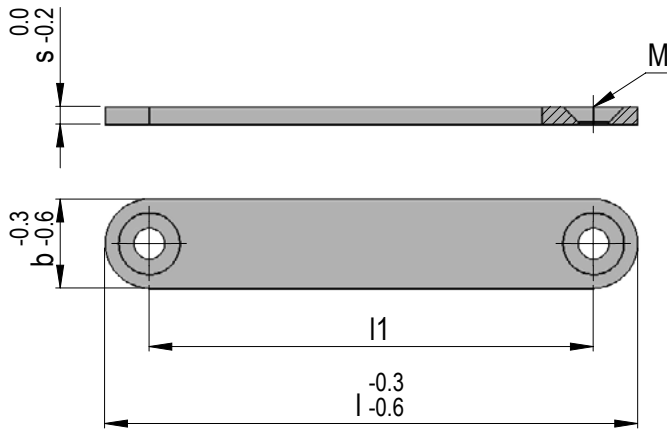
Mat.: 1.2842 ≈ 58 HRC



REF	d1	s	M
F26822008_1	20	8,1	M4
F26822010_1	20	10,1	M4
F26822012_1	20	12,1	M4
F26822508_1	25	8,1	M5
F26822510_1	25	10,1	M5
F26822512_1	25	12,1	M5
F26823208_1	32	8,1	M5
F26823210_1	32	10,1	M6
F26823212_1	32	12,1	M6
F26824008_1	40	8,1	M5

REF	d1	s	M
F26824010_1	40	10,1	M6
F26824012_1	40	12,1	M6
F26825008_1	50	8,1	M5
F26825010_1	50	10,1	M6
F26825012_1	50	12,1	M6
F26826408_1	64	8,1	M5
F26826410_1	64	10,1	M6
F26826412_1	64	12,1	M6
F26820810_1	80	10,1	M6
F26820812_1	80	12,1	M8

CABLE RETAINER **F2765**

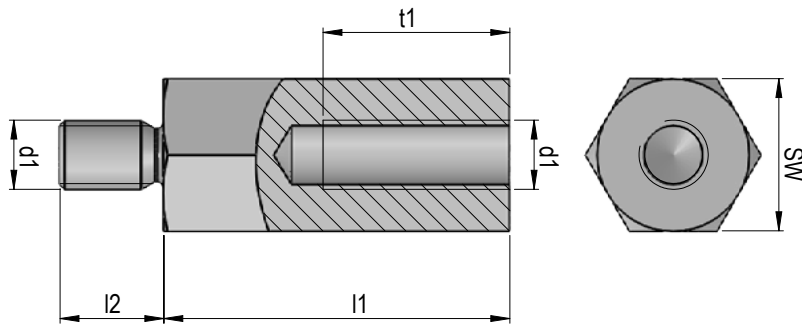


Mat.: 3.3206 / anodized



REF	l	l ₁	b	s	M
F27651020	30	20	10	2	M3
F27651030	40	30	10	2	M3
F27651040	50	40	10	2	M3
F27651050	60	50	10	2	M3
F27651230	42	30	12	3	M4
F27651245	57	45	12	3	M4
F27651260	72	60	12	3	M4

DISTANCE BOLT **K701**



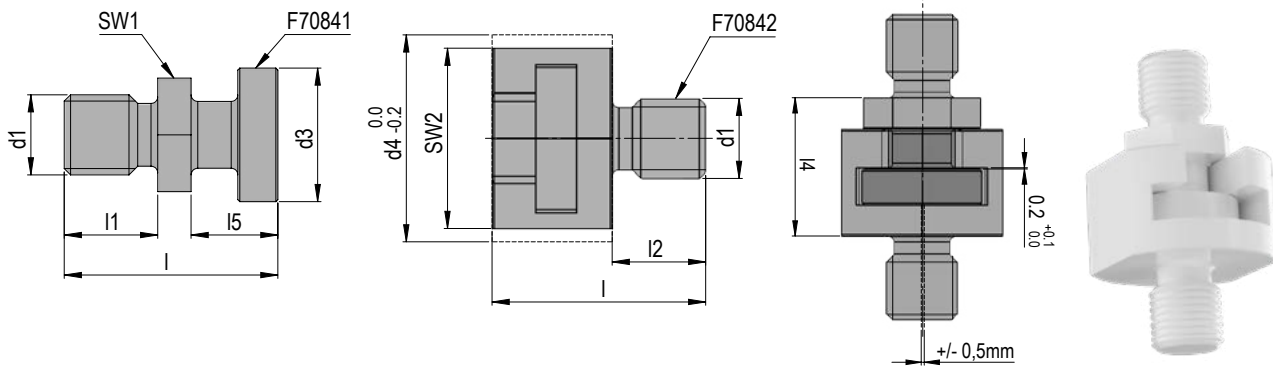
Mat.: 1.0501 / 900 N/mm²



REF	l ₁	SW	d ₁	t ₁	l ₂
K701081950	50,0	19	M8	27,0	15
K701102255	50,0	22	M10	27,0	15
K701162750	50,0	27	M16	32,0	20

COUPLING SET FOR HYDRAULIC CYLINDER
F7084

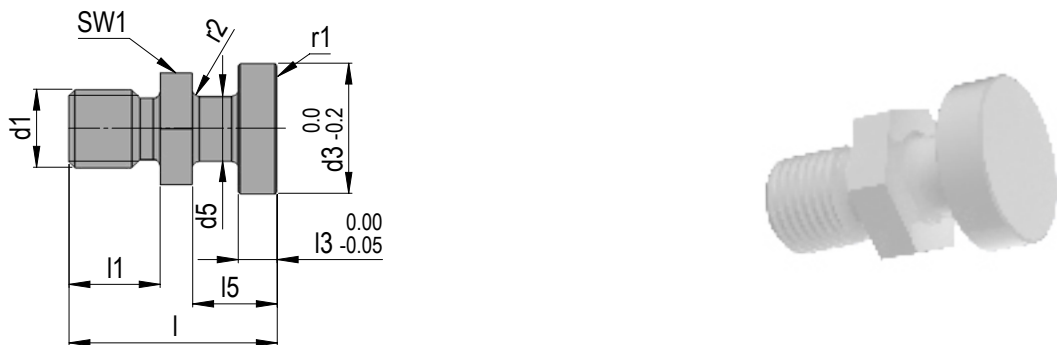
Mat.: 1.6580 with black oxid finish



REF	d1	l4	l	l1	l5	SW1	d3	l2	SW2	d4
F7084006	M6	20,3	25	10	10	10	12	10	17	22
F7084008	M8	21,3	27	11	11	13	16	11	21	26
F7084010	M10	25,3	33	14	13	17	20	14	27	32
F7084012	M12	23,3	32	14	13	17	20	14	27	32
F7084016	M16	29,3	46	24	15	22	25	24	32	37
F7084020	M20	41,3	58	28	21	27	32	26	41	47
F7084027	M27	48,3	74	38	27	36	40	35	50	57

COUPLING PIN FOR HYDRAULIC CYLINDER
F70841

Mat.: 1.6580 with black oxid finish

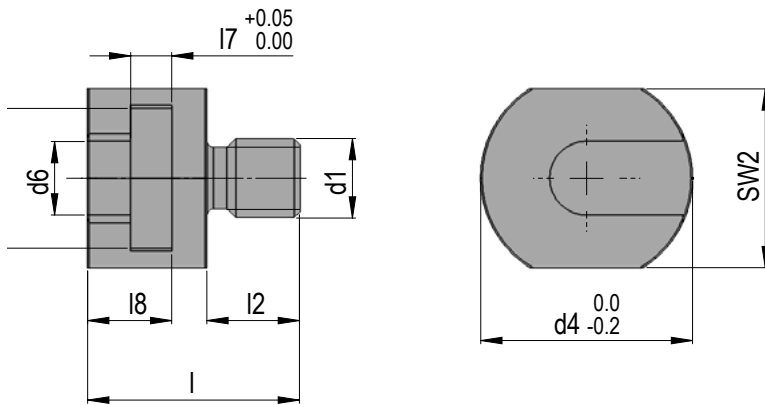


REF	d1	d3	l	l1	l5	SW1	d5	l3	r1	r2
F7084106	M6	12	25	10	6	10	6	5	230	1,0
F7084108	M8	16	27	11	8	13	8	6	240	1,0
F7084110	M10	20	33	14	10	17	10	6	320	1,0
F7084112	M12	20	32	14	10	17	10	6	320	1,0
F7084116	M16	25	46	24	16	22	16	7	400	1,0
F7084120	M20	32	58	28	18	27	18	10	500	1,5
F7084127	M27	40	74	38	24	36	24	13	630	1,5



COUNTER PIECE FOR COUPLING PIN **F70842**

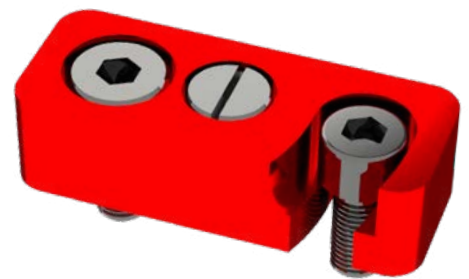
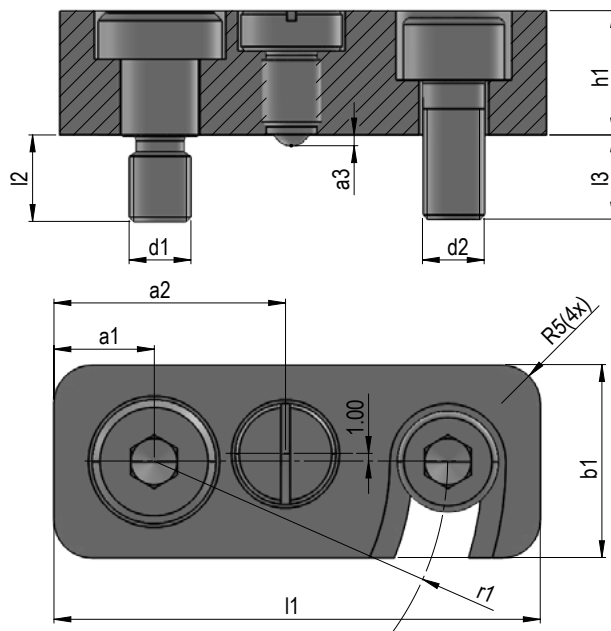
Mat.: 1.6580 with black oxid finish



REF	d1	d4	l	l2	l8	SW2	d6	d7	l7
F7084206	M6	22	25	10	9,7	17	7	13	5,2
F7084208	M8	26	27	11	10,7	21	9	17	6,2
F7084210	M10	32	33	14	12,7	27	11	21	6,2
F7084212	M12	32	32	14	12,7	27	11	21	6,2
F7084216	M16	37	46	24	14,7	32	17	26	7,2
F7084220	M20	47	58	26	20,7	41	19	33	10,2
F7084227	M27	57	74	35	26,7	50	25	41	13,2

TOOL SAFETY DEVICE **K73**

Mat.: 1.2312 / 1080 N/mm²



REF	l1	b1	h1	r1	a1	a2	a3	d1	d2	l2	l3
K73122050	50,0	20	12	30	10	24	0,9	M6	M6	9	8
K73162563	63,0	25	16	38	13	30	1,5	M8	M8	11	11
K73203280	80,0	32	20	48	15	35	2	M10	M10	13	13

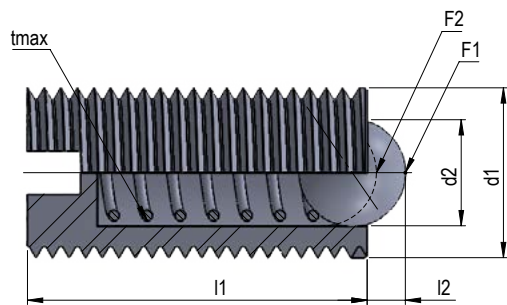
CAD reference point



LOCKING SCREW

SPRING-LOADED LOCKING SCREW WITH BALL - HIGHER SPRING FORCE
F1252

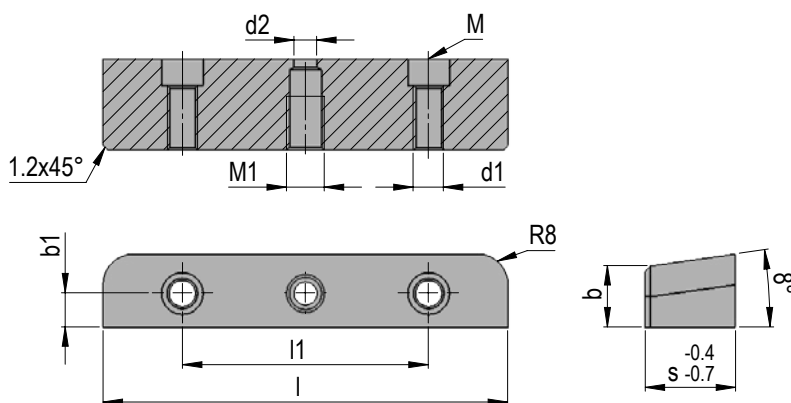
Mat.: 1.0715
Max. T.: 350°C



REF	d1	d2	l1	l2	F1	F2
F1252M03	M3	1,5	7	0,5	5	7
F1252M04	M4	2,5	9	0,8	12	22
F1252M05	M5	3	12	0,9	19	30
F1252M06	M6	3,5	14	1,0	28	40
F1252M08	M8	5	16	1,5	47	73
F1252M10	M10	6	19	2,0	66	100
F1252M12	M12	8	22	2,5	66	120
F1252M16	M16	10	24	3,5	90	180
F1252M20	M20	12	30	4,5	115	240

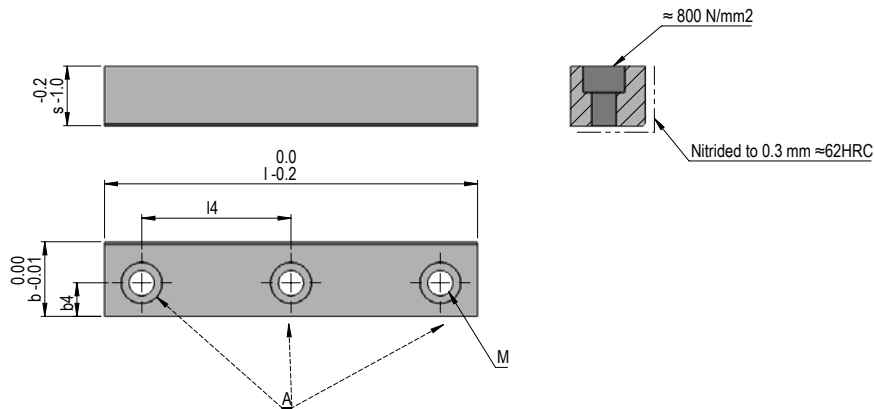
POSITIONING WEDGE F2670

Mat.: 1.2842 ≈ 58 HRC



REF	l	l1	b	b1	s	d1	M	M1
F26701305920	59	36	13	7,5	20	M8	M6	M8
F26701305924	59	36	13	7,5	24	M8	M6	M8
F26701305930	59	36	13	7,5	30	M8	M6	M8
F26701308320	83	50	13	7,5	20	M8	M6	M8
F26701308324	83	50	13	7,5	24	M8	M6	M8
F26701308330	83	50	13	7,5	30	M8	M6	M8
F26701311320	113	68	13	7,5	20	M8	M6	M8
F26701311324	113	68	13	7,5	24	M8	M6	M8
F26701311330	113	68	13	7,5	30	M8	M6	M8
F26701607724	77	46	16	9,0	24	M8	M6	M10
F26701607730	77	46	16	9,0	30	M8	M6	M10
F26701607738	77	46	16	9,0	38	M8	M6	M10
F26701610724	107	65	16	9,0	24	M8	M6	M10
F26701610730	107	65	16	9,0	30	M8	M6	M10
F26701610738	107	65	16	9,0	38	M8	M6	M10
F26701613724	137	84	16	9,0	24	M8	M6	M10
F26701613730	137	84	16	9,0	30	M8	M6	M10
F26701613738	137	84	16	9,0	38	M8	M6	M10
F26701910130	101	62	19	10,5	30	M10	M8	M10
F26701910138	101	62	19	10,5	38	M10	M8	M10
F26701910145	101	62	19	10,5	45	M10	M8	M10
F26701913130	131	80	19	10,5	30	M10	M8	M10
F26701913138	131	80	19	10,5	38	M10	M8	M10
F26701913145	131	80	19	10,5	45	M10	M8	M10
F26701916130	161	98	19	10,5	30	M10	M8	M10
F26701916138	161	98	19	10,5	38	M10	M8	M10
F26701916145	161	98	19	10,5	45	M10	M8	M10

GUIDING

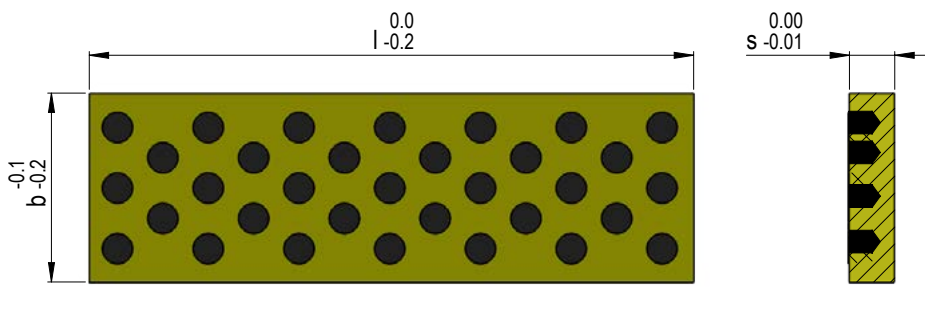
ONE SIDE GUIDING STOCK WITH HOLES
F3141


Mat.: 1.7035
Nitrided to 0,1mm 62HRC

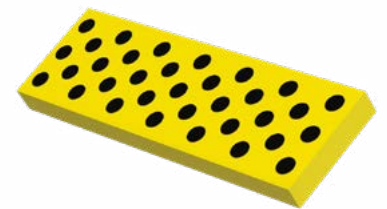


REF	b	s	l	b4	l4	A	M	Screw type
F31411606040	16	6	40	6	24,0	2	M5	flat head
F31411606050	16	6	50	6	34,0	2	M5	flat head
F31411606063	16	6	63	6	47,0	2	M5	flat head
F31411606080	16	6	80	6	32,0	3	M5	flat head
F31411608050	16	8	50	6	34,0	2	M5	flat head
F31411608063	16	8	63	6	47,0	2	M5	flat head
F31411608080	16	8	80	6	32,0	3	M5	flat head
F31411608100	16	8	100	6	42,0	3	M5	flat head
F31412012063	20	12	63	9	43,0	2	M6	standard
F31412012080	20	12	80	9	60,0	2	M6	standard
F31412012100	20	12	100	9	40,0	3	M6	standard
F31412012125	20	12	125	9	52,5	3	M6	standard
F31412016080	20	16	80	9	60,0	2	M6	standard
F31412016100	20	16	100	9	40,0	3	M6	standard
F31412016125	20	16	125	9	52,5	3	M6	standard
F31412016160	20	16	160	9	70,0	3	M6	standard
F31412522100	25	22	100	11	76,0	2	M8	standard
F31412522125	25	22	125	11	50,5	3	M8	standard
F31412522160	25	22	160	11	68,0	3	M8	standard
F31412522200	25	22	200	11	58,0	4	M8	standard
F31412530125	25	30	125	11	50,5	3	M8	standard
F31412530160	25	30	160	11	68,0	3	M8	standard
F31412530200	25	30	200	11	58,0	4	M8	standard
F31412530250	25	30	250	11	74,0	4	M8	standard
F31413238160	32	38	160	14	64,0	3	M10	standard
F31413238200	32	38	200	14	84,0	3	M10	standard
F31413238250	32	38	250	14	72,0	4	M10	standard
F31413238315	32	38	315	14	93,0	4	M10	standard

SELF-LUBRICATED SLIDE PLATE **F3172**



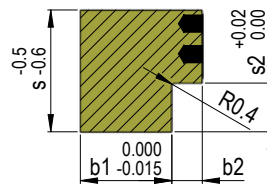
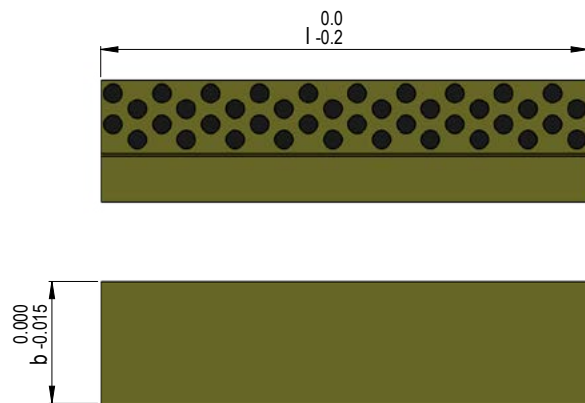
Mat.: 2.0598 ≈ 180 HB / Graphite
Max. T.: 200°C



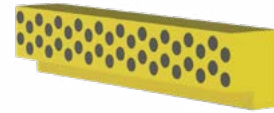
REF	s	b	l
F31721605005	5,0	16	50
F31721606305	5,0	16	63
F31721608005	5,0	16	80
F31721610005	5,0	16	100
F31722005006	6,0	20	50
F31722006306	6,0	20	63
F31722008006	6,0	20	80
F31722010006	6,0	20	100
F31722505006	6,0	25	50
F31722506306	6,0	25	63
F31722508006	6,0	25	80
F31722510006	6,0	25	100

REF	s	b	l
F31722512506	6,0	25	125
F31724008006	6,0	40	80
F31724010006	6,0	40	100
F31724012506	6,0	40	125
F31724016006	6,0	40	160
F31724020006	6,0	40	200
F31726312506	8,0	63	125
F31726316008	8,0	63	160
F31726320008	8,0	63	200
F31726325008	8,0	63	250
F31726331508	8,0	63	315

GUIDING

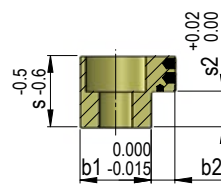
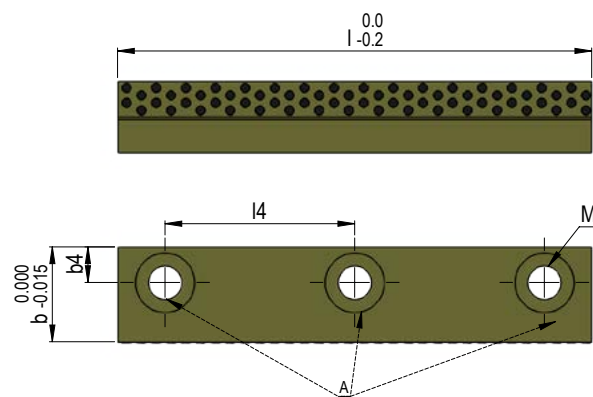
ONE SIDE SELF-LUBRICATED GUIDING STOCK WITHOUT HOLES
F3118


Mat.: 2.0598 ≈ 180 HB / Graphite
Max. T.: 200°C

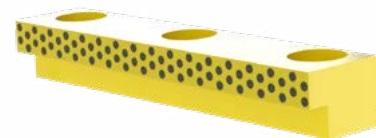


REF	b	s	l	b1	b2	s2
F31181206040	16	12	40	12	4	6
F31181206050	16	12	50	12	4	6
F31181206063	16	12	63	12	4	6
F31181206080	16	12	80	12	4	6
F31181608050	16	16	50	11	5	8
F31181608063	16	16	63	11	5	8
F31181608080	16	16	80	11	5	8
F31181608100	16	16	100	11	5	8
F31182008063	20	20	63	15	5	8
F31182008080	20	20	80	15	5	8
F31182008100	20	20	100	15	5	8
F31182008125	20	20	125	15	5	8
F31182011063	20	20	63	15	5	11
F31182011080	20	20	80	15	5	11
F31182011100	20	20	100	15	5	11
F31182011125	20	20	125	15	5	11
F31182508080	20	25	80	15	5	8
F31182508100	20	25	100	15	5	8
F31182508125	20	25	125	15	5	8
F31182508160	20	25	160	15	5	8
F31182513080	20	25	80	15	5	13
F31182513100	20	25	100	15	5	13
F31182513125	20	25	125	15	5	13
F31182513160	20	25	160	15	5	13
F31183210100	25	32	100	19	6	10
F31183210125	25	32	125	19	6	10
F31183210160	25	32	160	19	6	10
F31183210200	25	32	200	19	6	10
F31183216100	25	32	100	19	6	16
F31183216125	25	32	125	19	6	16
F31183216160	25	32	160	19	6	16
F31183216200	25	32	200	19	6	16
F31184010125	25	40	125	19	6	10
F31184010160	25	40	160	19	6	10
F31184010200	25	40	200	19	6	10
F31184010250	25	40	250	19	6	10
F31184016125	25	40	125	19	6	16
F31184016160	25	40	160	19	6	16
F31184016200	25	40	200	19	6	16
F31184016250	25	40	250	19	6	16
F31185012160	32	50	160	24	8	12
F31185012200	32	50	200	24	8	12
F31185012250	32	50	250	24	8	12
F31185012315	32	50	315	24	8	12
F31185020160	32	50	160	24	8	20
F31185020200	32	50	200	24	8	20
F31185020250	32	50	250	24	8	20
F31185020315	32	50	315	24	8	20

ONE SIDE SELF-LUBRICATED GUIDING STOCK WITH HOLES **F3119**



Mat.: 2.0598 ≈ 180 HB / Graphite
Max. T.: 200°C



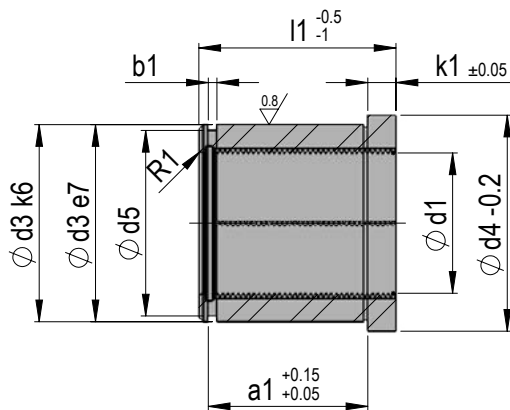
REF	b	s	l	b1	b2	s2	b4	l4	A	M
F31191206040	16	12	40	12	4	6	6	24	2	M5
F31191206050	16	12	50	12	4	6	6	34	2	M5
F31191206063	16	12	63	12	4	6	6	47	2	M5
F31191206080	16	12	80	12	4	6	6	32	3	M5
F31191608050	16	16	50	11	5	8	6	34	2	M5
F31191608063	16	16	63	11	5	8	6	47	2	M5
F31191608080	16	16	80	11	5	8	6	32	3	M5
F31191608100	16	16	100	11	5	8	6	42	3	M5
F31192008063	20	20	63	15	5	8	9	43	2	M6
F31192008080	20	20	80	15	5	8	9	60	2	M6
F31192008100	20	20	100	15	5	8	9	40	3	M6
F31192008125	20	20	125	15	5	8	9	53	3	M6
F31192011063	20	20	63	15	5	11	9	43	2	M6
F31192011080	20	20	80	15	5	11	9	60	2	M6
F31192011100	20	20	100	15	5	11	9	40	3	M6
F31192011125	20	20	125	15	5	11	9	53	3	M6
F31192508080	20	25	80	15	5	8	9	60	2	M6
F31192508100	20	25	100	15	5	8	9	40	3	M6
F31192508125	20	25	125	15	5	8	9	53	3	M6
F31192508160	20	25	160	15	5	8	9	70	3	M6
F31192513080	20	25	80	15	5	13	9	60	2	M6
F31192513100	20	25	100	15	5	13	9	40	3	M6
F31192513125	20	25	125	15	5	13	9	53	3	M6
F31192513160	20	25	160	15	5	13	9	70	3	M6
F31193210100	25	32	100	19	6	10	11	76	2	M8
F31193210125	25	32	125	19	6	10	11	51	3	M8
F31193210160	25	32	160	19	6	10	11	68	3	M8
F31193210200	25	32	200	19	6	10	11	58	4	M8
F31193216100	25	32	100	19	6	16	11	76	2	M8
F31193216125	25	32	125	19	6	16	11	51	3	M8
F31193216160	25	32	160	19	6	16	11	68	3	M8
F31193216200	25	32	200	19	6	16	11	58	4	M8
F31194010125	25	40	125	19	6	10	11	51	3	M8
F31194010160	25	40	160	19	6	10	11	68	3	M8
F31194010200	25	40	200	19	6	10	11	58	4	M8
F31194010250	25	40	250	19	6	10	11	74	4	M8
F31194016125	25	40	125	19	6	16	11	51	3	M8
F31194016160	25	40	160	19	6	16	11	68	3	M8
F31194016200	25	40	200	19	6	16	11	58	4	M8
F31194016250	25	40	250	19	6	16	11	74	4	M8
F31195012160	32	50	160	24	8	12	14	64	3	M10
F31195012200	32	50	200	24	8	12	14	84	3	M10
F31195012250	32	50	250	24	8	12	14	72	4	M10
F31195012315	32	50	315	24	8	12	14	93	4	M10
F31195020160	32	50	160	24	8	20	14	64	3	M10
F31195020200	32	50	200	24	8	20	14	84	3	M10
F31195020250	32	50	250	24	8	20	14	72	4	M10
F31195020315	32	50	315	24	8	20	14	93	4	M10

CAD reference point



LINEAR BALL BEARING - FLUSH LOCATION HEAD
K1100

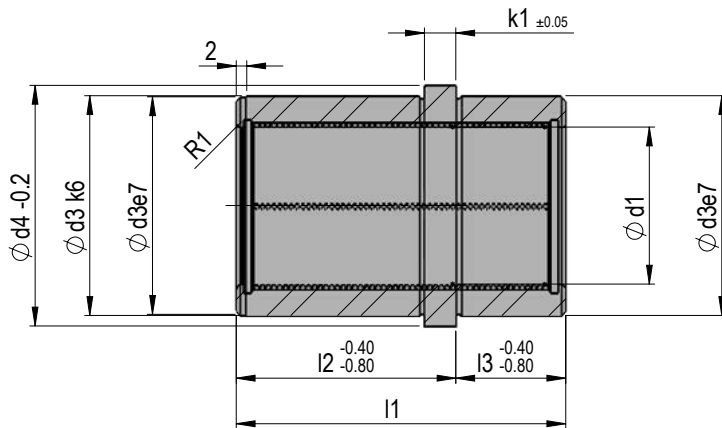
Mat.: 1.7131 60-62HRC / 3.2315



REF	d1	d3	d4	d5	l1	b1	a1	k1
K110002709	9	20	25	19	27	1,30	18,30	6
K110002714	14	26	31	25	27	1,30	18,30	6
K110002718	18	30	35	29	27	1,60	17,60	6
K110003609	9	20	25	19	36	1,30	27,30	6
K110003614	14	26	31	25	36	1,30	27,30	6
K110003618	18	30	35	29	36	1,60	26,60	6
K110003624	24	42	47	40	36	1,85	24,85	6
K110003630	9	20	25	19	46	1,30	37,30	6
K110003636	14	26	31	25	46	1,30	37,30	6
K110003642	18	30	35	29	46	1,60	36,60	6
K110003648	24	42	47	40	46	1,85	34,85	6
K110003654	32	54	60	51	46	2,15	30,15	10
K110003660	18	30	35	29	56	1,60	46,60	6
K110003666	24	42	47	40	56	1,85	44,85	6
K110003672	32	54	60	51	56	2,15	40,15	10
K110003678	24	42	47	40	66	1,85	54,85	6
K110003684	32	54	60	51	66	2,15	50,15	10
K110003690	24	42	47	40	76	1,85	64,85	6
K110003696	32	54	60	51	76	2,15	60,15	10
K110003702	24	42	47	40	86	1,85	74,85	6
K110003708	32	54	60	51	86	2,15	70,15	10
K110003714	32	54	60	51	96	2,15	80,15	10
K110003720	32	54	60	51	116	2,15	100,15	10

LINEAR BALL BEARING **K13**

Mat.: 1.7131 60-62HRC / 3.2315



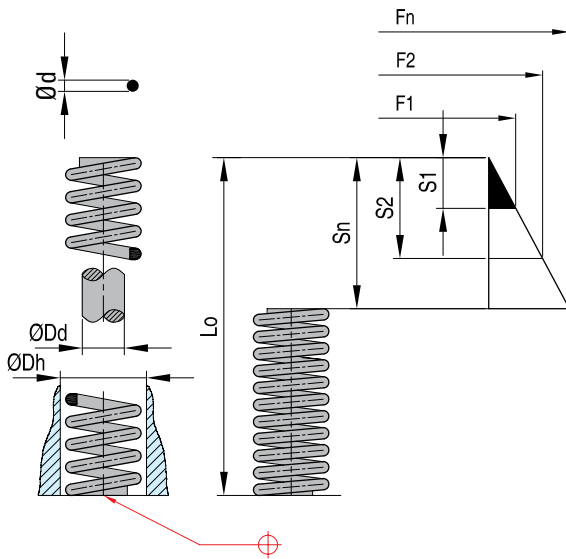
REF	d1	d3	d4	l1	l2	l3	k1
K13101209	10	20	24	21	12	9	6
K13101709	10	20	24	26	17	9	6
K13121709	12	24	28	26	17	9	6
K13121712	12	24	28	29	17	12	6
K13182212	18	32	36	34	22	12	6
K13182217	18	32	36	39	22	17	6
K13241712	24	39	43	29	17	12	6
K13242717	24	39	43	44	27	17	6
K13242722	24	39	43	49	27	22	6
K13302217	30	50	54	39	22	17	6
K13303222	30	50	54	54	32	22	6
K13303627	30	50	54	63	36	27	6
K13362217	36	56	60	39	22	17	6
K13482217	48	70	74	39	22	17	6

SYSTEM COMPRESSION SPRINGS - ROUND WIRE

GREEN SPRINGS - LIGHT LOAD
F1536

 Mat.: Special alloy
 Load range: High load
 Max. T.: 250°C

1N = 0,102kg



Compression for long working time		Maximal compression

REF	ØDh (mm)	ØDd (mm)	Ød (mm)	L0 (mm)	Spring rate (N/mm)	40%		45%		50%	
						S1 (mm)	F1 (N)	S2 (mm)	F2 (N)	Sn (mm)	Fn (N)
F15360060X016	6,0	4,8	0,6	16	1,6	6,4	10,0	7,2	11,2	8,0	12,4
F15360060X025	6,0	4,8	0,6	25	1,0	10,0	9,7	11,3	10,9	12,5	12,1
F15360060X038	6,0	4,8	0,6	38	0,6	15,2	9,5	17,1	10,7	19,0	11,9
F15360060X051	6,0	4,8	0,6	51	0,5	20,4	10,1	23,0	11,4	25,5	12,6
F15360080X016	8,0	6,4	0,8	16	2,5	6,4	15,7	7,2	17,7	8,0	19,7
F15360080X025	8,0	6,4	0,8	25	1,6	10,0	15,6	11,3	17,6	12,5	19,5
F15360080X038	8,0	6,4	0,8	38	1,1	15,2	16,6	17,1	18,7	19,0	20,7
F15360080X051	8,0	6,4	0,8	51	0,8	20,4	15,8	23,0	17,8	25,5	19,8

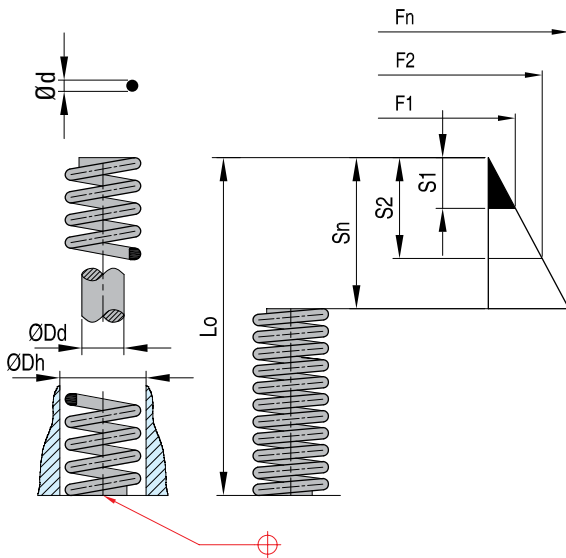
F15365

REF	ØDh (mm)	ØDd (mm)	Ød (mm)	L0 (mm)	Spring rate (N/mm)	25%		30%		40%	
						S1 (mm)	F1 (N)	S2 (mm)	F2 (N)	Sn (mm)	Fn (N)
F15365100X025	10,0	5,0	1,1	25	4,4	6,3	28,0	7,5	33,0	10,0	44,0
F15365100X032	10,0	5,0	1,1	32	3,4	8,0	27,0	9,6	33,0	12,8	44,0
F15365100X038	10,0	5,0	1,1	38	2,8	9,5	26,0	11,4	32,0	15,2	42,0
F15365100X044	10,0	5,0	1,1	44	2,4	11,0	26,0	13,2	31,0	17,6	42,0
F15365100X051	10,0	5,0	1,1	51	2,1	12,8	27,0	15,3	32,0	20,4	43,0
F15365100X064	10,0	5,0	1,1	64	1,6	16,0	26,0	19,2	31,0	25,6	42,0
F15365100X076	10,0	5,0	1,1	76	1,3	19,0	25,0	22,8	30,0	30,4	40,0
F15365100X305	10,0	5,0	1,1	305	0,3	76,3	24,0	91,5	29,0	122,0	38,0
F15365125X025	12,5	6,3	1,5	25	8,5	6,3	53,0	7,5	64,0	10,0	85,0
F15365125X032	12,5	6,3	1,5	32	6,5	8,0	52,0	9,6	62,0	12,8	83,0
F15365125X038	12,5	6,3	1,5	38	5,3	9,5	51,0	11,4	61,0	15,2	81,0
F15365125X044	12,5	6,3	1,5	44	4,4	11,0	49,0	13,2	59,0	17,6	78,0
F15365125X051	12,5	6,3	1,5	51	3,8	12,8	48,0	15,3	58,0	20,4	78,0
F15365125X064	12,5	6,3	1,5	64	2,9	16,0	47,0	19,2	56,0	25,6	75,0
F15365125X076	12,5	6,3	1,5	76	2,5	19,0	48,0	22,8	57,0	30,4	76,0
F15365125X089	12,5	6,3	1,5	89	2,1	22,3	47,0	26,7	56,0	35,6	75,0
F15365125X305	12,5	6,3	1,5	305	0,6	76,3	45,0	91,5	54,0	122,0	73,0
F15365160X025	16,0	8,0	2,0	25	17,9	6,3	112,0	7,5	134,0	10,0	179,0
F15365160X032	16,0	8,0	2,0	32	13,5	8,0	108,0	9,6	129,0	12,8	173,0
F15365160X038	16,0	8,0	2,0	38	10,5	9,5	100,0	11,4	120,0	15,2	160,0
F15365160X044	16,0	8,0	2,0	44	8,8	11,0	96,0	13,2	116,0	17,6	154,0
F15365160X051	16,0	8,0	2,0	51	7,6	12,8	97,0	15,3	116,0	20,4	155,0
F15365160X064	16,0	8,0	2,0	64	5,9	16,0	95,0	19,2	114,0	25,6	152,0
F15365160X076	16,0	8,0	2,0	76	4,8	19,0	91,0	22,8	109,0	30,4	145,0
F15365160X089	16,0	8,0	2,0	89	4,0	22,3	90,0	26,7	108,0	35,6	142,0
F15365160X102	16,0	8,0	2,0	102	3,5	25,5	89,0	30,6	107,0	40,8	143,0
F15365160X305	16,0	8,0	2,0	305	1,1	76,3	85,0	91,5	101,0	122,0	134,0

BLUE SPRINGS - MEDIUM LOAD

F1537

Mat.: Special alloy
 Load range: High load
 Max. T.: 250°C
 1N = 0,102kg



Compression for long working time		Maximal compression

REF	ØDh (mm)	ØDd (mm)	Ød (mm)	L0 (mm)	Spring rate (N/mm)	30%		35%		40%	
						S1 (mm)	F1 (N)	S2 (mm)	F2 (N)	Sn (mm)	Fn (N)
F15370060X016	6,0	4,8	0,6	16	4,7	4,8	22,6	5,6	26,3	6,4	30,1
F15370060X025	6,0	4,8	0,6	25	2,9	7,5	21,4	8,8	24,9	10,0	28,5
F15370060X038	6,0	4,8	0,6	38	1,8	11,4	21,0	13,3	24,5	15,2	28,0
F15370060X051	6,0	4,8	0,6	51	1,5	15,3	22,4	17,9	26,2	20,4	29,9
F15370080X016	8,0	6,4	0,8	16	5,4	4,8	25,8	5,6	30,1	6,4	34,4
F15370080X025	8,0	6,4	0,8	25	3,6	7,5	27,3	8,8	31,9	10,0	36,4
F15370080X038	8,0	6,4	0,8	38	2,4	11,4	27,5	13,3	32,1	15,2	36,7
F15370080X051	8,0	6,4	0,8	51	1,9	15,3	29,2	17,9	34,0	20,4	38,9

F15375

REF	ØDh (mm)	ØDd (mm)	Ød (mm)	L0 (mm)	Spring rate (N/mm)	30%		35%		40%	
						S1 (mm)	F1 (N)	S2 (mm)	F2 (N)	Sn (mm)	Fn (N)
F15375100X025	10,0	5,0	1,5	25	12,3	6,3	77,0	7,5	92,0	9,4	115,0
F15375100X032	10,0	5,0	1,5	32	9,5	8,0	76,0	9,6	91,0	12,0	113,0
F15375100X038	10,0	5,0	1,5	38	7,8	9,5	74,0	11,4	88,0	14,3	111,0
F15375100X044	10,0	5,0	1,5	44	6,5	11,0	72,0	13,2	86,0	16,5	108,0
F15375100X051	10,0	5,0	1,5	51	5,6	12,8	72,0	15,3	86,0	19,1	107,0
F15375100X064	10,0	5,0	1,5	64	4,5	16,0	71,0	19,2	86,0	24,0	107,0
F15375100X076	10,0	5,0	1,5	76	3,7	19,0	70,0	22,8	84,0	28,5	105,0
F15375100X305	10,0	5,0	1,5	305	0,9	76,3	68,0	91,5	82,0	114,0	102,0
F15375125X025	12,5	6,3	1,8	25	21,7	6,3	136,0	7,5	163,0	9,4	204,0
F15375125X032	12,5	6,3	1,8	32	16,8	8,0	134,0	9,6	161,0	12,0	202,0
F15375125X038	12,5	6,3	1,8	38	13,8	9,5	131,0	11,4	158,0	14,3	197,0
F15375125X044	12,5	6,3	1,8	44	11,6	11,0	127,0	13,2	153,0	16,5	191,0
F15375125X051	12,5	6,3	1,8	51	10,0	12,8	128,0	15,3	153,0	19,1	191,0
F15375125X064	12,5	6,3	1,8	64	7,8	16,0	125,0	19,2	150,0	24,0	187,0
F15375125X076	12,5	6,3	1,8	76	6,4	19,0	122,0	22,8	146,0	28,5	183,0
F15375125X089	12,5	6,3	1,8	89	5,6	22,3	125,0	26,7	150,0	33,4	188,0
F15375125X305	12,5	6,3	1,8	305	1,5	76,3	115,0	91,5	137,0	114,0	171,0
F15375160X025	16,0	8,0	2,2	25	31,9	6,3	201,0	7,5	239,0	9,4	299,0
F15375160X032	16,0	8,0	2,2	32	24,0	8,0	192,0	9,6	230,0	12,0	288,0
F15375160X038	16,0	8,0	2,2	38	19,4	9,5	185,0	11,4	222,0	14,3	277,0
F15375160X044	16,0	8,0	2,2	44	16,1	11,0	177,0	13,2	213,0	16,5	266,0
F15375160X051	16,0	8,0	2,2	51	13,8	12,8	176,0	15,3	212,0	19,1	265,0
F15375160X064	16,0	8,0	2,2	64	10,7	16,0	171,0	19,2	205,0	24,0	256,0
F15375160X076	16,0	8,0	2,2	76	8,8	19,0	166,0	22,8	200,0	28,5	250,0
F15375160X089	16,0	8,0	2,2	89	7,5	22,3	167,0	26,7	200,0	33,4	250,0
F15375160X102	16,0	8,0	2,2	102	6,5	25,5	166,0	30,6	199,0	38,3	248,0
F15375160X305	16,0	8,0	2,2	305	2,1	76,3	159,0	91,5	191,0	114,0	238,0

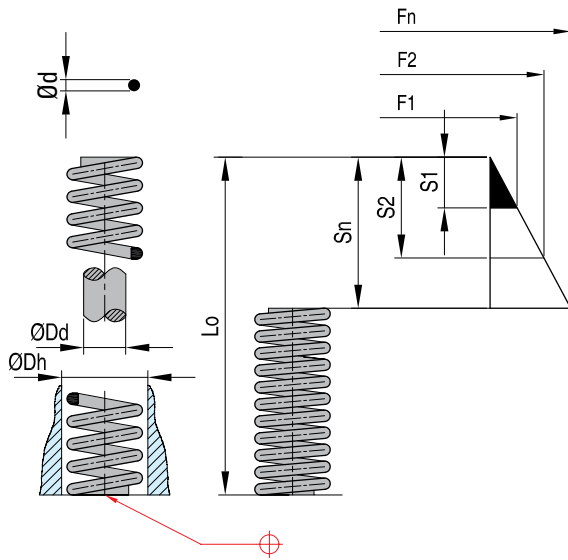
CAD reference point

SYSTEM COMPRESSION SPRINGS - ROUND WIRE

RED SPRINGS - HEAVY LOAD
F1538

Mat.: Special alloy
Load range: High load
Max. T.: 250°C

1N = 0,102kg



Compression for long working time		Maximal compression

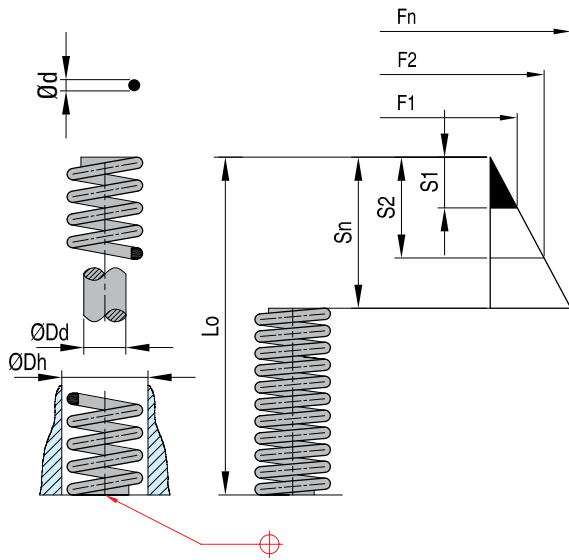
REF	ØDh (mm)	ØDd (mm)	Ød (mm)	L0 (mm)	Spring rate (N/mm)	20%		25%		30%	
						S1 (mm)	F1 (N)	S2 (mm)	F2 (N)	Sn (mm)	Fn (N)
F15380060X016	6,0	4,0	1,0	16	12,7	3,2	40,8	4,0	51,0	4,8	61,2
F15380060X025	6,0	4,0	1,0	25	7,7	5,0	38,7	6,3	48,3	7,5	58,0
F15380060X038	6,0	4,0	1,0	38	4,9	7,6	37,3	9,5	46,6	11,4	56,0
F15380060X051	6,0	4,0	1,0	51	3,7	10,2	37,5	12,8	46,8	15,3	56,2
F15380080X016	8,0	5,6	1,2	16	12,5	3,2	40,0	4,0	50,0	4,8	60,1
F15380080X025	8,0	5,6	1,2	25	6,9	5,0	34,5	6,3	43,1	7,5	51,7
F15380080X038	8,0	5,6	1,2	38	5,1	7,6	38,4	9,5	48,0	11,4	57,6
F15380080X051	8,0	5,6	1,2	51	4,0	10,2	40,8	12,8	50,9	15,3	61,1

F15385

REF	ØDh (mm)	ØDd (mm)	Ød (mm)	L0 (mm)	Spring rate (N/mm)	22%		25%		30%	
						S1 (mm)	F1 (N)	S2 (mm)	F2 (N)	Sn (mm)	Fn (N)
F15385100X025	10,0	5,0	1,6	25	20,7	5,0	103,0	6,3	129,0	7,5	155,0
F15385100X032	10,0	5,0	1,6	32	16,1	6,4	103,0	8,0	129,0	9,6	155,0
F15385100X038	10,0	5,0	1,6	38	13,0	7,6	98,0	9,5	123,0	11,4	148,0
F15385100X044	10,0	5,0	1,6	44	10,9	8,8	96,0	11,0	119,0	13,2	143,0
F15385100X051	10,0	5,0	1,6	51	9,6	10,2	98,0	12,8	123,0	15,3	147,0
F15385100X064	10,0	5,0	1,6	64	7,7	12,8	99,0	16,0	123,0	19,2	148,0
F15385100X076	10,0	5,0	1,6	76	6,3	15,2	96,0	19,0	119,0	22,8	143,0
F15385100X305	10,0	5,0	1,6	305	1,5	61,0	93,0	76,3	116,0	91,5	137,0
F15385125X025	12,5	6,3	2,2	25	37,5	5,0	187,0	6,3	236,0	7,5	281,0
F15385125X032	12,5	6,3	2,2	32	28,9	6,4	185,0	8,0	231,0	9,6	277,0
F15385125X038	12,5	6,3	2,2	38	23,5	7,6	178,0	9,5	223,0	11,4	268,0
F15385125X044	12,5	6,3	2,2	44	19,6	8,8	173,0	11,0	216,0	13,2	259,0
F15385125X051	12,5	6,3	2,2	51	17,3	10,2	177,0	12,8	221,0	15,3	265,0
F15385125X064	12,5	6,3	2,2	64	13,5	12,8	173,0	16,0	216,0	19,2	259,0
F15385125X076	12,5	6,3	2,2	76	11,2	15,2	170,0	19,0	213,0	22,8	256,0
F15385125X089	12,5	6,3	2,2	89	9,5	17,8	168,0	22,3	210,0	26,7	252,0
F15385125X305	12,5	6,3	2,2	305	2,7	61,0	165,0	76,3	206,0	91,5	247,0
F15385160X025	16,0	8,0	2,8	25	81,6	5,0	408,0	6,3	514,0	7,5	612,0
F15385160X032	16,0	8,0	2,8	32	61,3	6,4	392,0	8,0	490,0	9,6	588,0
F15385160X038	16,0	8,0	2,8	38	49,9	7,6	379,0	9,5	474,0	11,4	569,0
F15385160X044	16,0	8,0	2,8	44	40,8	8,8	359,0	11,0	449,0	13,2	539,0
F15385160X051	16,0	8,0	2,8	51	35,6	10,2	363,0	12,8	456,0	15,3	544,0
F15385160X064	16,0	8,0	2,8	64	27,8	12,8	356,0	16,0	446,0	19,2	535,0
F15385160X076	16,0	8,0	2,8	76	22,8	15,2	346,0	19,0	433,0	22,8	519,0
F15385160X089	16,0	8,0	2,8	89	19,6	17,8	349,0	22,3	436,0	26,7	524,0
F15385160X102	16,0	8,0	2,8	102	17,0	20,4	347,0	25,5	433,0	30,6	520,0
F15385160X305	16,0	8,0	2,8	305	5,4	61,0	330,0	76,3	413,0	91,5	495,0

YELLOW SPRINGS - VERY HEAVY LOAD **F1539**

Mat.: Special alloy
 Load range: High load
 Max. T.: 250°C
 1N = 0,102kg

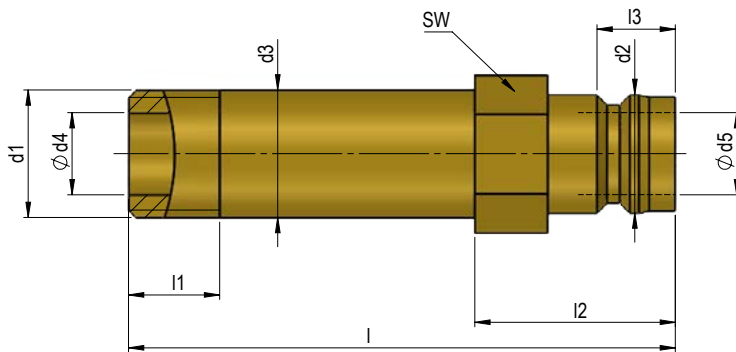


Compression for long working time		Maximal compression

REF	ØDh (mm)	ØDd (mm)	Ød (mm)	L0 (mm)	Spring rate (N/mm)	15%		18%		20%	
						S1 (mm)	F1 (N)	S2 (mm)	F2 (N)	Sn (mm)	Fn (N)
F15390060X016	6,0	3,6	1,2	16	33,0	2,4	79,2	2,9	95,1	3,2	105,6
F15390060X025	6,0	3,6	1,2	25	19,8	3,8	74,3	4,5	89,2	5,0	99,0
F15390060X038	6,0	3,6	1,2	38	11,9	5,7	67,9	6,8	81,5	7,6	90,6
F15390060X051	6,0	3,6	1,2	51	9,5	7,7	72,7	9,2	87,3	10,2	97,0
F15390080X016	8,0	5,0	1,5	16	30,9	2,4	74,0	2,9	88,8	3,2	98,7
F15390080X025	8,0	5,0	1,5	25	23,0	3,8	86,3	4,5	103,5	5,0	115,0
F15390080X038	8,0	5,0	1,5	38	13,2	5,7	75,4	6,8	90,5	7,6	100,6
F15390080X051	8,0	5,0	1,5	51	9,3	7,7	70,8	9,2	85,0	10,2	94,4

CAD reference point

Mat.: 2.0401 (CuZn)



REF	d1	l	d2	d3	d4	d5	SW	l1	l2
F201609M08060	M8x0,75	60	9	8	4,5	4,5	10	7	21
F201609M08080	M8x0,75	80	9	8	4,5	4,5	10	7	21
F201609M08100	M8x0,75	100	9	8	4,5	4,5	10	7	21
F201609M10060	M10x1	60	9	10	6,0	6,0	11	7	21
F201609M10080	M10x1	80	9	10	6,0	6,0	11	7	21
F201609M10100	M10x1	100	9	10	6,0	6,0	11	7	21
F201609M10120	M10x1	120	9	10	6,0	6,0	11	7	21
F201609M10140	M10x1	140	9	10	6,0	6,0	11	7	21
F201609G18060	G 1/8"	60	9	10	6,0	6,0	11	7	21
F201609G18080	G 1/8"	80	9	10	6,0	6,0	11	7	21
F201609G18100	G 1/8"	100	9	10	6,0	6,0	11	7	21
F201609G18120	G 1/8"	120	9	10	6,0	6,0	11	7	21
F201609G18140	G 1/8"	140	9	10	6,0	6,0	11	7	21
F201613M14060	M14x1,5	60	13	14	9,0	9,0	15	10	22
F201613M14080	M14x1,5	80	13	14	9,0	9,0	15	10	22
F201613M14100	M14x1,5	100	13	14	9,0	9,0	15	10	22
F201613M14120	M14x1,5	120	13	14	9,0	9,0	15	10	22
F201613M14140	M14x1,5	140	13	14	9,0	9,0	15	10	22
F201613M14160	M14x1,5	160	13	14	9,0	9,0	15	10	22
F201613G14060	G 1/4"	60	13	13	8,0	8,0	14	10	22
F201613G14080	G 1/4"	80	13	13	8,0	8,0	14	10	22
F201613G14100	G 1/4"	100	13	13	8,0	8,0	14	10	22
F201613G14120	G 1/4"	120	13	13	8,0	8,0	14	10	22
F201613G14140	G 1/4"	140	13	13	8,0	8,0	14	10	22
F201613G14160	G 1/4"	160	13	13	8,0	8,0	14	10	22
F201619G12100	G 1/2"	100	19	21	13,0	13,0	22	12	37
F201619G12150	G 1/2"	150	19	21	13,0	13,0	22	12	37
F201619G12250	G 1/2"	250	19	21	13,0	13,0	22	12	37



eSTORE

store.dme.net

Your One Stop Shop



Available Online **24/7**

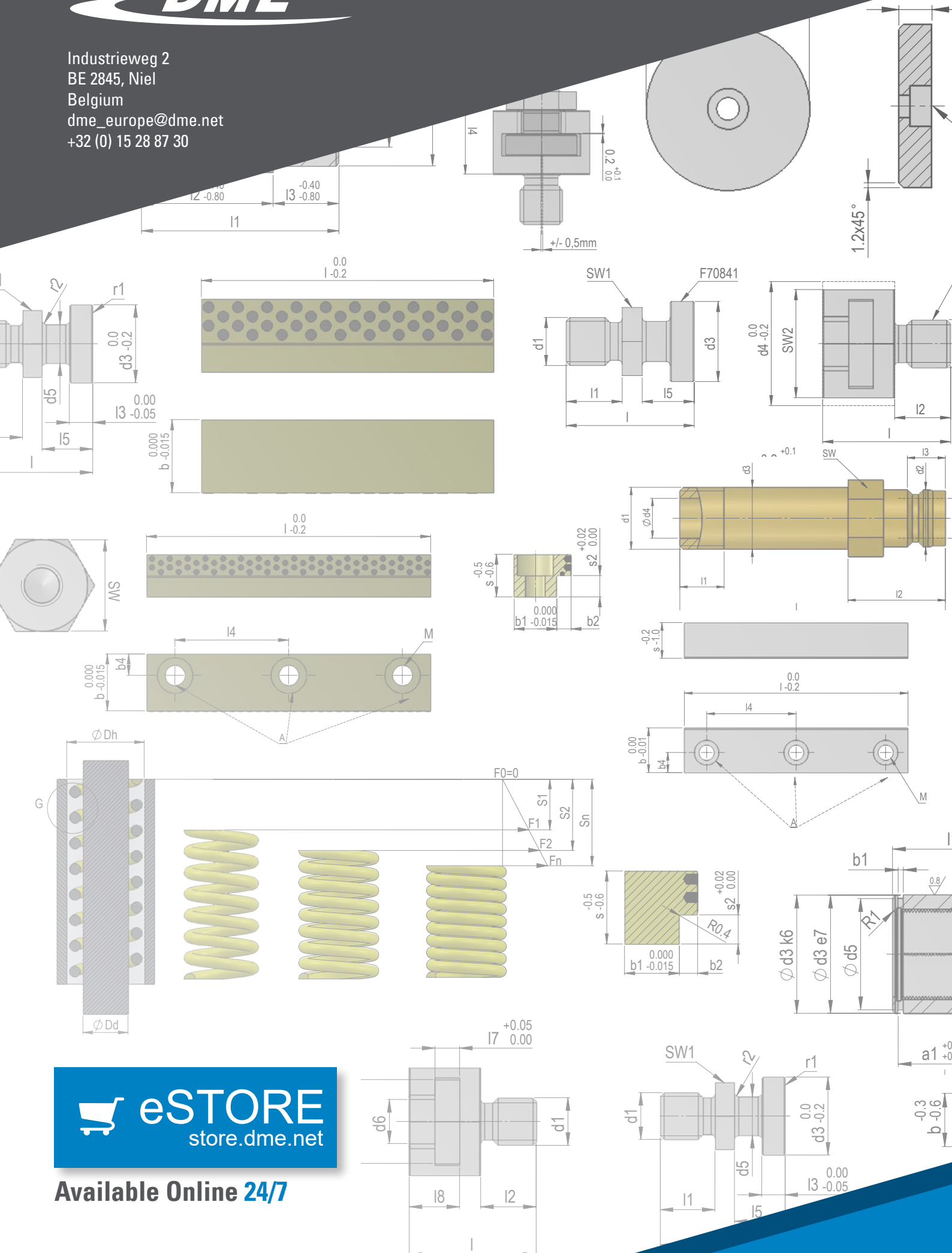


YOUR BENEFITS

- Easy registration process
- 40.000 active items
- Robust 3D CAD library (35 native formats)
- Mouldbase configurators
- 15 language versions
- Bulk order
- Converter features
- LIVE support - chat



Industrieweg 2
BE 2845, Niel
Belgium
dme_europe@dme.net
+32 (0) 15 28 87 30



 **eSTORE**
store.dme.net

Available Online 24/7