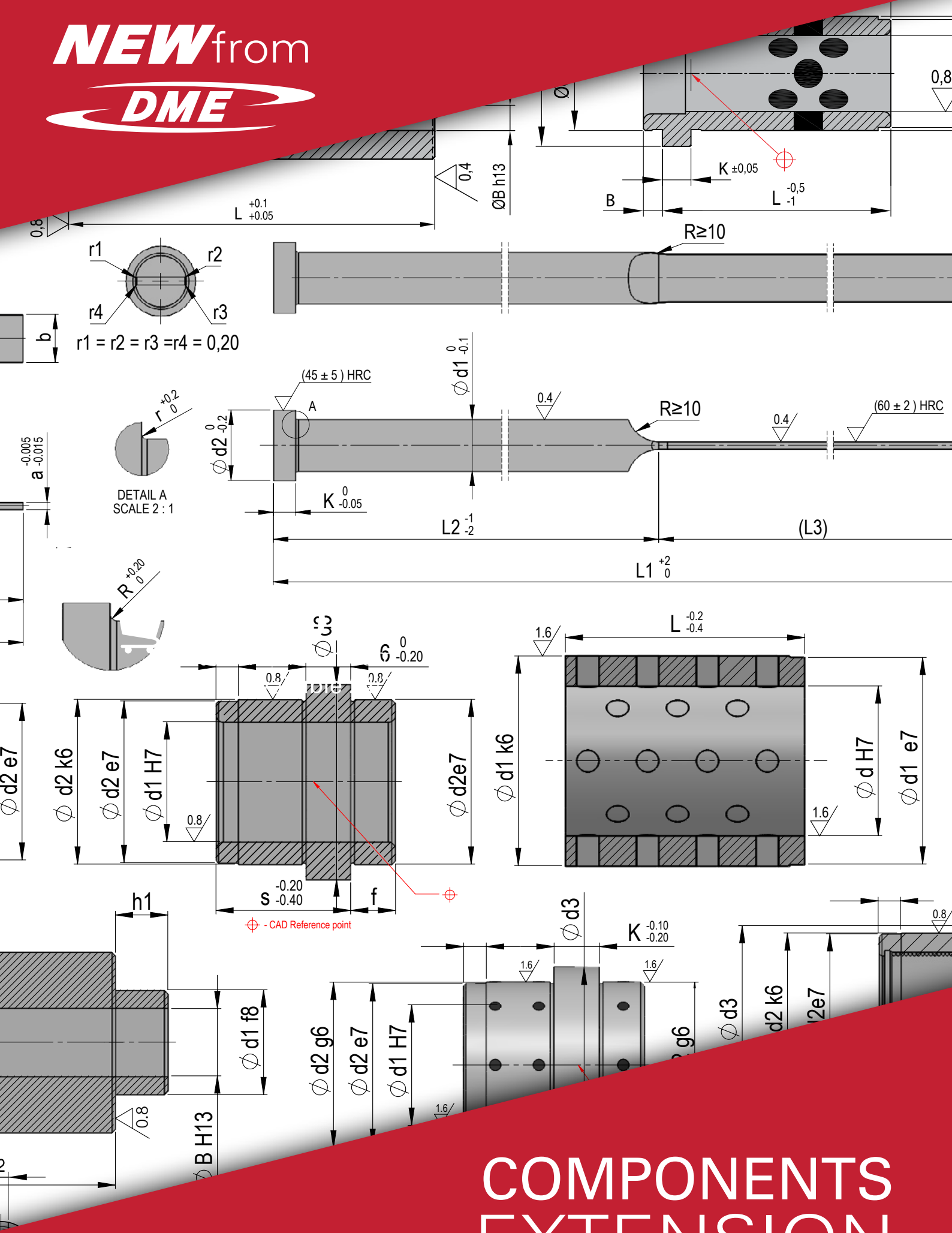


NEW from



**COMPONENTS
EXTENSION**

NEW ADDITIONS TO DME COMPONENTS OFFER

DME guiding systems now include **NEW GUIDE BUSHES** with and without a collar for standard guiding. **EJECTOR SETS** in a variety of materials such as steel and bronze & fitted with graphite inserts for permanent lubrication. They are further enhanced with the special sintered layer. The ejector sets now include as well the **NEW INCLINED PIN WITH COLLAR**.

DME also brings to the market **NEW SUPPORT PILLARS WITH GUIDING**, support pillars with guiding diameter with and without offset and corresponding guide bushes. Guide bushes are available in bronze, with graphite inserts or as self-lubricating ball guide bushes.

New additions to the guiding systems support your applications with higher variety of products. This includes a greater resistance to wear and very good emergency operating features.

DME further enlarges its range of standard **EJECTOR PINS**, adding new hardened ejector pin with anti-rotating lock and two flat ejector types with two and four radii.



CONTENT

Angle pins 3

F1030 3

Guiding 4

R04W 4

F1127 4

F11202 5

F11206 5

F1512 6

SP 6

F1121 7

F1126 7

F1145 8

Ejector pins 9

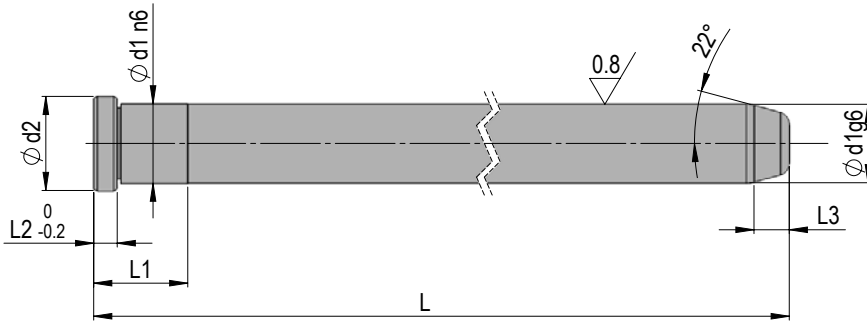
EAV 9

F2R 10

F4R 11

ANGLE PINS **NEW product F1030**

Mat.: 1.7131 ≈ 60 HRC



(F1030 + d1 + L): **F103009040**

d1	L																				d2	L1	L2	L3				
	40	50	60	70	80	90	100	110	120	140	160	180	200	220	240	250	260	280	300	320					360	400	440	
09	●		●	●	●	●	●		●																11	12	3	4
10	●	●	●	●	●	●	●		●	●	●														12	12	3	4
12		●	●	●	●	●	●	●	●	●	●	●	●												15	17	6	5
14			●	●	●	●	●	●	●	●	●	●	●	●											17	22	8	5
16		●	●	●	●	●	●	●	●	●	●	●	●	●	●		●								19	22	8	5
18			●	●	●	●	●	●	●	●	●	●	●	●	●		●	●							21	22	8	7
20				●	●	●	●	●	●	●	●	●	●	●	●		●	●	●	●					23	22	8	7
22					●		●		●	●	●	●	●	●	●		●	●	●	●					25	27	10	7
24					●		●		●	●	●	●	●	●	●		●	●	●	●	●				27	27	10	7
30							●		●	●	●	●	●	●	●		●	●	●	●	●	●	●		35	36	10	7
32							●		●	●	●	●	●	●	●		●		●	●	●	●			35	36	10	7
40									●	●	●	●	●	●	●		●		●	●	●	●	●		45	36	10	7

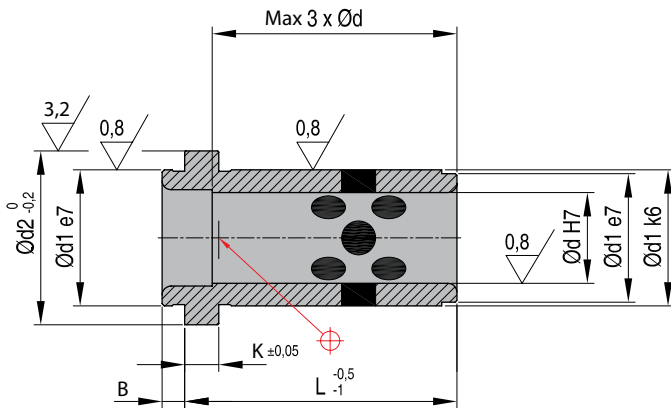
GUIDING

SELF LUBRICATING LEADER PIN BUSHINGS

NEW sizes

R04W

Mat.: 2.0598 ≈ 200HB + graphite



(R04W + d + L): **R04W0917**

d value must be chosen amongst the two values displayed. It can be any of the two, on customer's choice.

d	d1	L																d1	d2	K	B			
		12	17	22	27	36	46	56	66	76	86	96	116	136	156	176	196					216	236	256
09	10	●	•	•	•	•	●	●													14	18	3	3
14	15	•	•	•	•	•	•	•	•	•											20	25	6	9
18	20		●	•	•	•	•	•	•	•	•										26	31	6	9
22	24			•	•	•	•	•	•	•	•	•									30	35	6	9
30	32				•	•	•	•	•	•	•	•	•	•							42	47	6	9
40	42					•	•	•	•	•	•	•	•	•	•	•	•	•	•	•	54	60	10	12
50	52							•	•	•	•	•	•	•	•	•	•	•	•	•	66	71	10	10

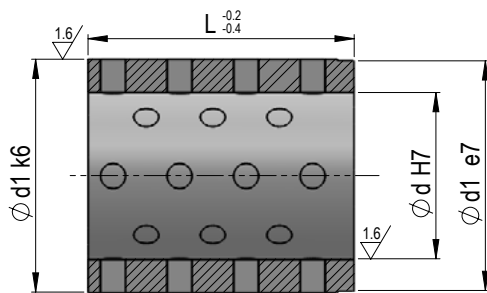
● NEW SIZES

SELF LUBRICATING LEADER PIN BUSHINGS

NEW product

F1127

Mat.: 2.0598 ≈ 200HB + graphite



(F1127 + d + d1 + L): **F1127091408**

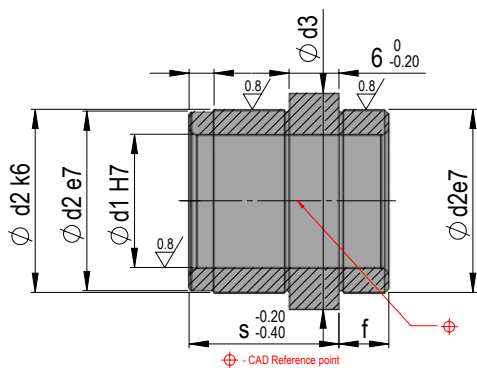
d value must be chosen amongst the two values displayed. It can be any of the two, on customer's choice.

d	d1	L							
		08	12	16	20	25	32	40	50
09	10	●	●	●					
12	16		●	●	●				
14	15		●	●	●				
16	22			●	●	●			
18	20			●	●	●	●		
22	24				●	●	●	●	
30	32					●	●	●	●

CAD reference point

BALL GUIDE BUSH **NEW product F11202**

Mat.: 1.7131 ≈ 60 HRC

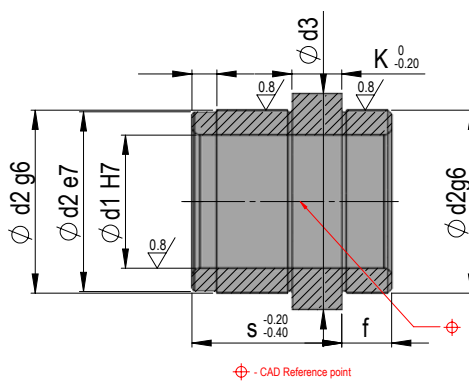


REF	d1	f	s	d2	d3
F11202100912	10	9	12	14	17
F11202100917	10	9	17	14	17
F11202120917	12	9	17	16	19
F11202121217	12	12	17	16	19
F11202141217	14	12	17	18	21
F11202141222	14	12	22	18	21
F11202141722	14	17	22	18	21
F11202181217	18	12	17	24	27
F11202181222	18	12	22	24	27
F11202181722	18	17	22	24	27
F11202181727	18	17	27	24	27
F11202182227	18	22	27	24	27
F11202201722	20	17	22	26	29

REF	d1	f	s	d2	d3
F11202202227	20	22	27	26	29
F11202221722	22	17	22	28	31
F11202222227	22	22	27	28	31
F11202241722	24	17	22	30	33
F11202241727	24	17	27	30	33
F11202242227	24	22	27	30	33
F11202242736	24	27	36	30	33
F11202302227	30	22	27	38	41
F11202302736	30	27	36	38	41
F11202302746	30	27	46	38	41
F11202303646	30	36	46	38	41
F11202403646	40	36	46	48	51

BALL GUIDE BUSH **NEW product F11206**

Mat.: 1.0503 ≈ 50 HRC / Sint+MoS2
t max. = 250°C



Type 1 - whole part sintered
Type 2 - body 1.0503 + sintered layer on the internal diameter (d1)

REF	d1	f	s	d2	d3	K	Type
F11206100510	10	5	10	14	16	3	1
F11206101010	10	10	10	14	16	3	1
F11206100912	10	9	12	14	17	6	1
F11206100917	10	9	17	14	17	6	1
F11206120917	12	9	17	16	19	6	1
F11206121217	12	12	17	16	19	6	1
F11206141217	14	12	17	18	21	6	1
F11206141222	14	12	22	18	21	6	1
F11206141722	14	17	22	18	21	6	1
F11206181217	18	12	17	24	27	6	1
F11206181222	18	12	22	24	27	6	1
F11206181722	18	17	22	24	27	6	1
F11206181727	18	17	27	24	27	6	1
F11206182227	18	22	27	24	27	6	1

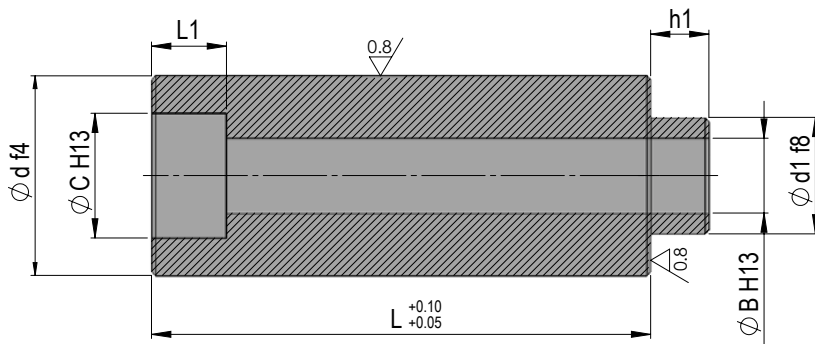
REF	d1	f	s	d2	d3	K	Type
F11206201722	20	17	22	26	29	6	1
F11206202227	20	22	27	26	29	6	1
F11206221722	22	17	22	28	31	6	1
F11206222227	22	22	27	28	31	6	1
F11206241722	24	17	22	30	33	6	1
F11206241727	24	17	27	30	33	6	1
F11206242227	24	22	27	30	33	6	1
F11206242736	24	27	36	30	33	6	2
F11206302227	30	22	27	38	41	6	2
F11206302736	30	27	36	38	41	6	2
F11206302746	30	27	46	38	41	6	2
F11206303646	30	36	46	38	41	6	2
F11206403646	40	36	46	48	51	6	2

CAD reference point

GUIDING

SUPPORT PILLAR WITH GUIDING
NEW product F1512

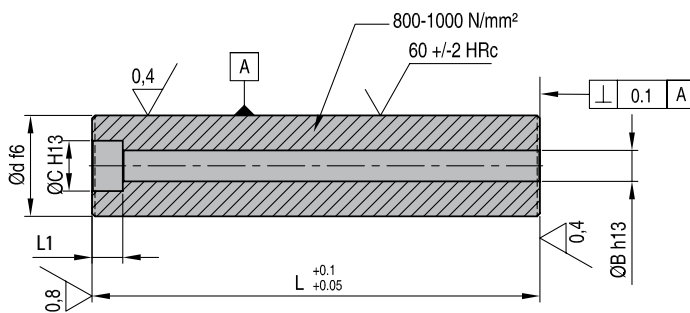
Mat.: 1.1213 ≈ 60 HRC


 (F1512 + d + L): **F151224036**

d	L										d1	h1	B	L1	C	Screw
	36	46	56	66	76	86	96	116	136	156						
24	●	●	●	●	●	●	●	●			14	7	9	9	15	M8
36		●	●	●	●	●	●	●	●		18	9	11	11	18	M10
48		●	●	●	●	●	●	●	●	●	20	10	13	13	20	M12

SUPPORT PILLAR
NEW sizes
SP

Mat.: 1.7131



REF	d	L	B	L1	C	Screw
SP24050	24	50	9	9	15	M8 x 60
SP24060	24	60	9	9	15	M8 x 70
SP24070	24	70	9	9	15	M8 x 80
SP24080	24	80	9	9	15	M8 x 90
SP24090	24	90	9	9	15	M8 x 100
SP24100	24	100	9	9	15	M8 x 110
● SP24120	24	120	9	9	15	M8 x 130
● SP24140	24	140	9	9	15	M8 x 150
● SP24160	24	160	9	9	15	M8 x 180
● SP24180	24	180	9	9	15	M8 x 200
● SP36050	36	50	11	11	18	M10 x 70
SP36060	36	60	11	11	18	M10 x 80
SP36070	36	70	11	11	18	M10 x 90
SP36080	36	80	11	11	18	M10 x 100
SP36090	36	90	11	11	18	M10 x 110
SP36100	36	100	11	11	18	M10 x 120
SP36110	36	110	11	11	18	M10 x 130

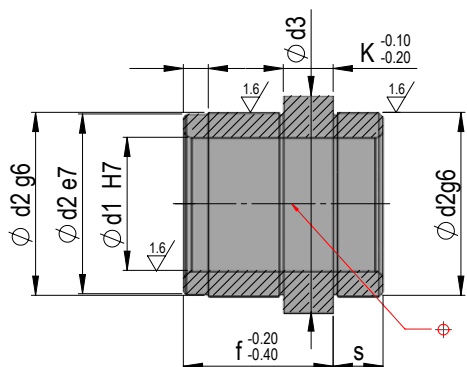
REF	d	L	B	L1	C	Screw
SP36120	36	120	11	11	18	M10 x 140
SP36130	36	130	11	11	18	M10 x 150
SP36140	36	140	11	11	18	M10 x 160
● SP36160	36	160	11	11	18	M10 x 180
● SP36180	36	180	11	11	18	M10 x 200
● SP48060	48	60	13	13	20	M12 x 80
● SP48070	48	70	13	13	20	M12 x 90
SP48080	48	80	13	13	20	M12 x 100
SP48090	48	90	13	13	20	M12 x 110
SP48100	48	100	13	13	20	M12 x 120
SP48110	48	100	13	13	20	M12 x 130
SP48120	48	120	13	13	20	M12 x 140
SP48130	48	130	13	13	20	M12 x 150
SP48140	48	140	13	13	20	M12 x 160
SP48160	48	160	13	13	20	M12 x 180
SP48180	48	180	13	13	20	M12 x 200

● NEW SIZES

CAD reference point

GUIDE BUSH FOR SUPPORT PILLAR **NEW product** **F1121**

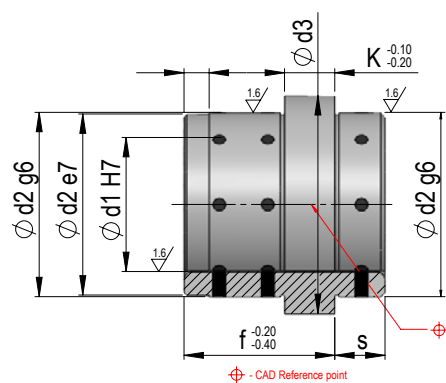
Mat.: 2.0598 ≈ 200HB



REF	d1	s	f	d2	d3	K
F1121240917	24	9	17	32	36	5
F1121241217	24	12	17	32	36	5
F1121240620	24	6	20	32	36	5
F1121361217	36	12	17	44	48	5
F1121361222	36	12	22	44	48	5
F1121361722	36	17	22	44	48	5
F1121360624	36	6	24	44	48	5
F1121481722	48	17	22	58	62	6
F1121481727	48	17	27	58	62	6
F1121481030	48	10	30	58	62	6

GUIDE BUSH FOR SUPPORT PILLAR **NEW product** **F1126**

Mat.: 2.0598 ≈ 200HB + graphite

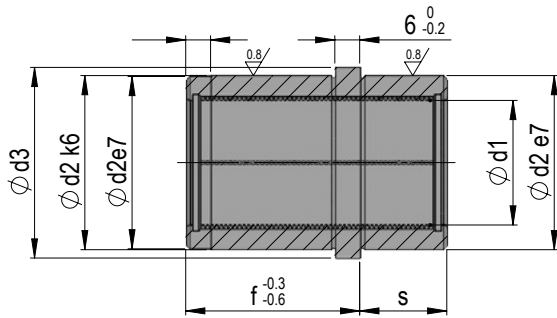


REF	d1	s	f	d2	d3	K
F1126240620	24	9	17	32	36	5
F1126240917	24	12	17	32	36	5
F1126241217	24	6	20	32	36	5
F1126360624	36	12	17	44	48	5
F1126361217	36	12	22	44	48	5
F1126361222	36	17	22	44	48	5
F1126361722	36	6	24	44	48	5
F1126481030	48	17	22	58	62	6
F1126481722	48	17	27	58	62	6
F1126481727	48	10	30	58	62	6

CAD reference point

GUIDE BUSH FOR SUPPORT PILLAR
NEW product F1145

Mat.: 1.3505 ≈ 62 HRC / 2.0598



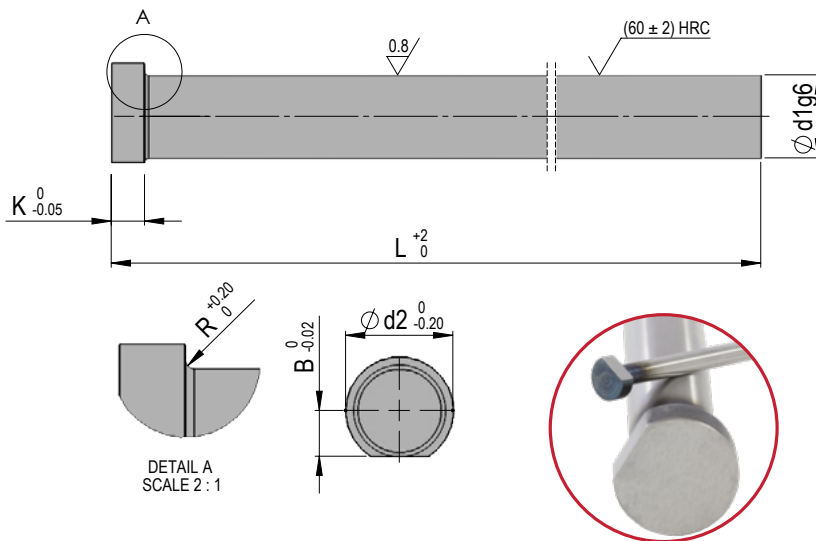
REF	d1	s	f	d2	d3
F1145241217	24	12	17	38	41
F1145241722	24	17	22	38	41
F1145361722	36	17	22	54	58
F1145362227	36	22	27	54	58
F1145482227	48	22	27	68	73
F1145482736	48	27	36	68	73

EJECTOR PIN TYPE AH WITH ANTI-TWIST

NEW product

EAV

Mat.: 1.2210 hardened
ISO 6751 (DIN 1530 A)
Form AH



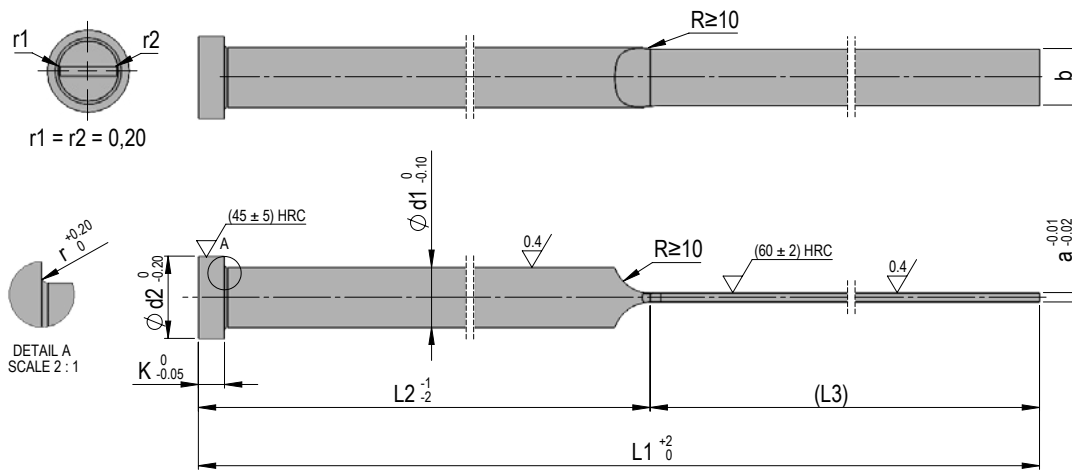
REF	d1	L	B	K	d2	R
EAV02-00100	2,0	100	1,50	2	4	0,2
EAV02-00125	2,0	125	1,50	2	4	0,2
EAV02-00160	2,0	160	1,50	2	4	0,2
EAV02-00200	2,0	200	1,50	2	4	0,2
EAV02-00250	2,0	250	1,50	2	4	0,2
EAV02-20100	2,2	100	1,60	2	4	0,2
EAV02-20160	2,2	160	1,60	2	4	0,2
EAV02-20250	2,2	250	1,60	2	4	0,2
EAV02-50100	2,5	100	1,75	2	5	0,3
EAV02-50160	2,5	160	1,75	2	5	0,3
EAV02-50250	2,5	250	1,75	2	5	0,3
EAV02-70100	2,7	100	1,85	2	5	0,3
EAV02-70160	2,7	160	1,85	2	5	0,3
EAV02-70250	2,7	250	1,85	2	5	0,3
EAV03-00100	3,0	100	2,00	3	6	0,3
EAV03-00125	3,0	125	2,00	3	6	0,3
EAV03-00160	3,0	160	2,00	3	6	0,3
EAV03-00200	3,0	200	2,00	3	6	0,3
EAV03-00250	3,0	250	2,00	3	6	0,3
EAV03-00400	3,0	400	2,00	3	6	0,3
EAV03-20100	3,2	100	2,10	3	6	0,3
EAV03-20160	3,2	160	2,10	3	6	0,3
EAV03-20250	3,2	250	2,10	3	6	0,3
EAV03-50100	3,5	100	2,25	3	7	0,3
EAV03-50160	3,5	160	2,25	3	7	0,3
EAV03-50250	3,5	250	2,25	3	7	0,3
EAV03-70100	3,7	100	2,35	3	7	0,3
EAV03-70160	3,7	160	2,35	3	7	0,3
EAV03-70250	3,7	250	2,35	3	7	0,3
EAV04-00100	4,0	100	2,50	3	8	0,3
EAV04-00125	4,0	125	2,50	3	8	0,3
EAV04-00160	4,0	160	2,50	3	8	0,3
EAV04-00200	4,0	200	2,50	3	8	0,3
EAV04-00250	4,0	250	2,50	3	8	0,3
EAV04-00400	4,0	400	2,50	3	8	0,3
EAV04-20100	4,2	100	2,60	3	8	0,3
EAV04-20160	4,2	160	2,60	3	8	0,3
EAV04-20250	4,2	250	2,60	3	8	0,3
EAV04-50100	4,5	100	2,75	3	8	0,3
EAV04-50160	4,5	160	2,75	3	8	0,3
EAV04-50250	4,5	250	2,75	3	8	0,3
EAV05-00100	5,0	100	3,50	3	10	0,3
EAV05-00125	5,0	125	3,50	3	10	0,3
EAV05-00160	5,0	160	3,50	3	10	0,3
EAV05-00200	5,0	200	3,50	3	10	0,3
EAV05-00250	5,0	250	3,50	3	10	0,3
EAV05-00400	5,0	400	3,50	3	10	0,3
EAV05-20100	5,2	100	3,60	3	10	0,3
EAV05-20160	5,2	160	3,60	3	10	0,3

REF	d1	L	B	K	d2	R
EAV05-20250	5,2	250	3,60	3	10	0,3
EAV05-50100	5,5	100	3,75	3	10	0,3
EAV05-50160	5,5	160	3,75	3	10	0,3
EAV05-50250	5,5	250	3,75	3	10	0,3
EAV06-00100	6,0	100	4,00	5	12	0,5
EAV06-00125	6,0	125	4,00	5	12	0,5
EAV06-00160	6,0	160	4,00	5	12	0,5
EAV06-00200	6,0	200	4,00	5	12	0,5
EAV06-00250	6,0	250	4,00	5	12	0,5
EAV06-00400	6,0	400	4,00	5	12	0,5
EAV06-20100	6,2	100	4,10	5	12	0,5
EAV06-20160	6,2	160	4,10	5	12	0,5
EAV06-20250	6,2	250	4,10	5	12	0,5
EAV06-50100	6,5	100	4,25	5	12	0,5
EAV06-50160	6,5	160	4,25	5	12	0,5
EAV06-50250	6,5	250	4,25	5	12	0,5
EAV07-00100	7,0	100	4,50	5	12	0,5
EAV07-00160	7,0	160	4,50	5	12	0,5
EAV07-00250	7,0	250	4,50	5	12	0,5
EAV08-00100	8,0	100	5,00	5	14	0,5
EAV08-00125	8,0	125	5,00	5	14	0,5
EAV08-00160	8,0	160	5,00	5	14	0,5
EAV08-00200	8,0	200	5,00	5	14	0,5
EAV08-00250	8,0	250	5,00	5	14	0,5
EAV08-00400	8,0	400	5,00	5	14	0,5
EAV08-50125	8,5	125	5,25	5	14	0,5
EAV08-50250	8,5	250	5,25	5	14	0,5
EAV09-00125	9,0	125	5,50	5	14	0,5
EAV09-00250	9,0	250	5,50	5	14	0,5
EAV10-00100	10,0	100	6,00	5	16	0,5
EAV10-00125	10,0	125	6,00	5	16	0,5
EAV10-00160	10,0	160	6,00	5	16	0,5
EAV10-00200	10,0	200	6,00	5	16	0,5
EAV10-00250	10,0	250	6,00	5	16	0,5
EAV10-00400	10,0	400	6,00	5	16	0,5
EAV12-00100	12,0	100	7,00	7	18	0,8
EAV12-00125	12,0	125	7,00	7	18	0,8
EAV12-00160	12,0	160	7,00	7	18	0,8
EAV12-00200	12,0	200	7,00	7	18	0,8
EAV12-00250	12,0	250	7,00	7	18	0,8
EAV12-00400	12,0	400	7,00	7	18	0,8
EAV14-00100	14,0	100	8,50	7	22	0,8
EAV14-00160	14,0	160	8,50	7	22	0,8
EAV14-00250	14,0	250	8,50	7	22	0,8
EAV14-00400	14,0	400	8,50	7	22	0,8
EAV16-00100	16,0	100	9,50	7	22	0,8
EAV16-00160	16,0	160	9,50	7	22	0,8
EAV16-00250	16,0	250	9,50	7	22	0,8
EAV16-00400	16,0	400	9,50	7	22	0,8

CAD reference point

EJECTOR PINS

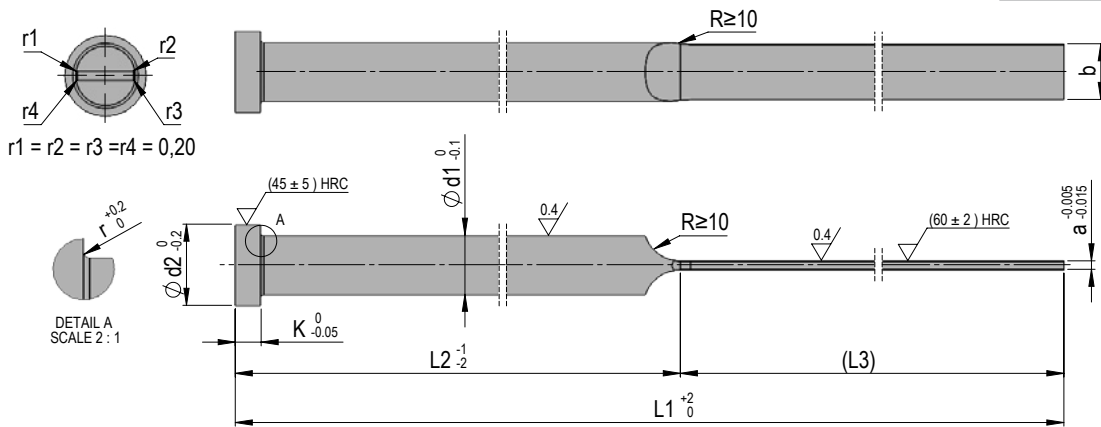
FLAT EJECTOR PIN WITH 2 RADII
NEW product
F2R

 Mat.: 1.2210 hardened
 ISO 8693 (DIN 1530 A)
 Form FAH

 (F2R + a + b + L1): **F2R0-502-8080**

a	b	L1								d1	d2	K	r
		63	80	100	125	160	200	250	315				
		L2											
		30	40	50	60	80	100	125	160				
L3													
		33	40	50	65	80	100	125	155				
0,5	2,8		●	●	●	●				3	6	3	0,3
0,6			●	●	●	●				3	6	3	0,3
0,8			●	●	●	●	●			3	6	3	0,3
1,0				●	●	●	●	●		3	6	3	0,3
0,5	3,8		●	●	●	●				4,2	8	3	0,3
0,6			●	●	●	●	●			4,2	8	3	0,3
0,8		●	●	●	●	●	●	●		4,2	8	3	0,3
1,0		●	●	●	●	●	●	●	●	4,2	8	3	0,3
1,2				●	●	●	●	●	●	4,2	8	3	0,3
1,0	4,5			●	●	●	●	●	●	5	10	3	0,3
1,2				●	●	●	●	●	●	5	10	3	0,3
1,5				●	●	●	●	●	●	5	10	3	0,3
1,0				●	●	●	●	●	●	6	12	5	0,5
1,2	5,5		●	●	●	●	●	●	●	6	12	5	0,5
1,5				●	●	●	●	●	●	6	12	5	0,5
2,0				●	●	●	●	●	●	6	12	5	0,5
1,2				●	●	●	●	●	●	8	14	5	0,5
1,5	7,5				●	●	●	●	●	8	14	5	0,5
2,0						●	●	●	●	8	14	5	0,5
1,5							●	●	●	10	16	5	0,5
2,0	9,5						●	●	●	10	16	5	0,5
2,0								●	●	12	18	7	0,8
2,5	11,5							●	●	12	18	7	0,8

FLAT EJECTOR PIN WITH 4 RADII NEW product F4R

Mat.:1.2210 hardened
ISO 8693 (DIN 1530 A)
Form FAH



(F4R + a + b + L1): **F4R0-502-8080**

a	b	L1								d1	d2	K	r	
		63	80	100	125	160	200	250	315					
		L2												
		30	40	50	60	80	100	125	160					
L3														
		33	40	50	65	80	100	125	155					
0,5	2,8		●	●	●	●				3	6	3	0,3	
0,6			●	●	●	●				3	6	3	0,3	
0,8			●	●	●	●	●			3	6	3	0,3	
1,0				●	●	●	●	●		3	6	3	0,3	
0,5	3,8		●	●	●	●				4,2	8	3	0,3	
0,6			●	●	●	●	●			4,2	8	3	0,3	
0,8		●	●	●	●	●	●	●		4,2	8	3	0,3	
1,0		●	●	●	●	●	●	●	●	4,2	8	3	0,3	
1,2			●	●	●	●	●	●	4,2	8	3	0,3		
1,0	4,5		●	●	●	●	●	●	●	5	10	3	0,3	
1,2			●	●	●	●	●	●	●	5	10	3	0,3	
1,5				●	●	●	●	●	●	5	10	3	0,3	
1,0		5,5		●	●	●	●	●	●	●	6	12	5	0,5
1,2			●	●	●	●	●	●	●	6	12	5	0,5	
1,5				●	●	●	●	●	●	6	12	5	0,5	
2,0				●	●	●	●	●	●	6	12	5	0,5	
1,2	7,5			●	●	●	●	●	●	8	14	5	0,5	
1,5					●	●	●	●	●	8	14	5	0,5	
2,0					●	●	●	●	●	8	14	5	0,5	
1,5		9,5				●	●	●	●	●	10	16	5	0,5
2,0						●	●	●	●	10	16	5	0,5	
2,0	11,5							●	●	●	12	18	7	0,8
2,5									●	●	●	12	18	7

CAD reference point





eSTORE
store.dme.net
Available Online
24/7

MOULD EJECTION



MOULD COMPONENTS



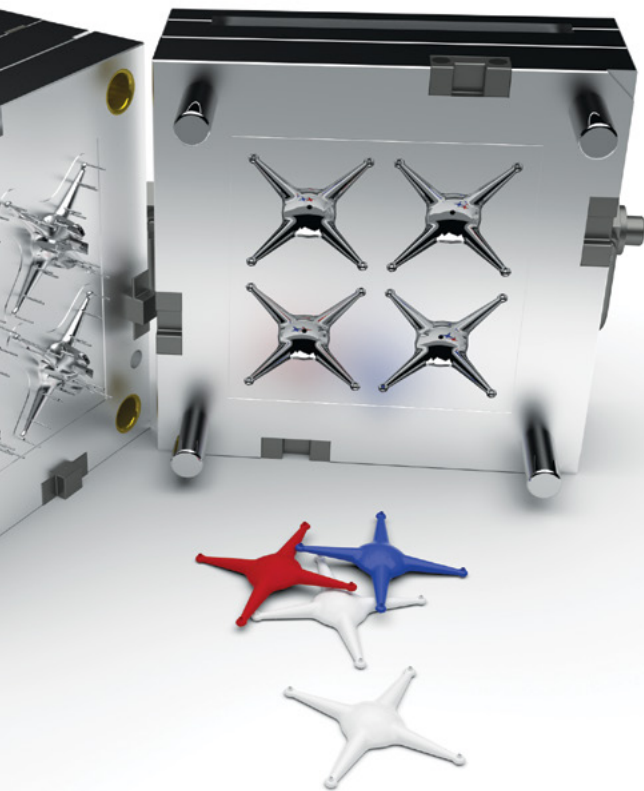
PRE-ENGINEERED COMPONENTS



MOULD COOLING



TOOLS & AUXILIARIES



Schaliënhoevedreef 20-D
(Mechelen Campus)
Mechelen | BE-2800 | Belgium
dme_uk@dme.net
+44 2071 3300 37

(60 ± 2) HRC

Ø d1

L +0.10
+0.05

B-0.2